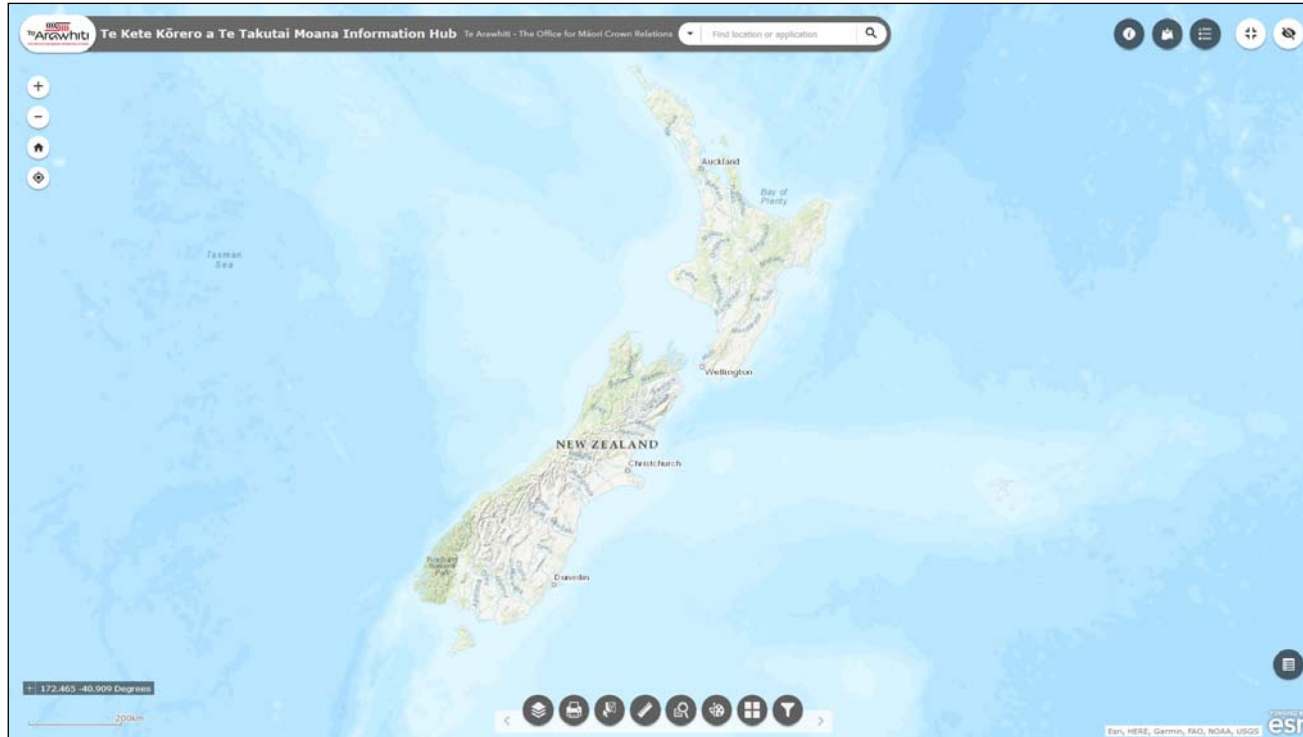


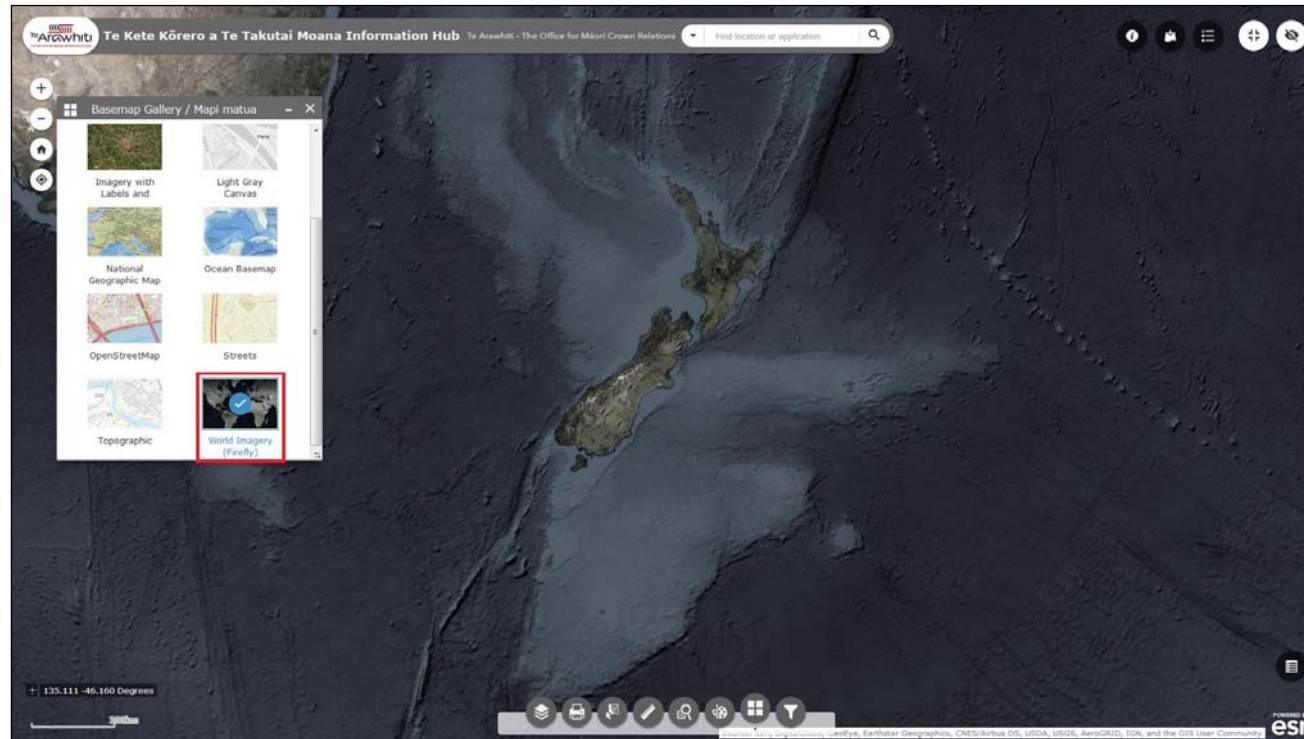
Te Kete Kōrero a Te Takutai Moana



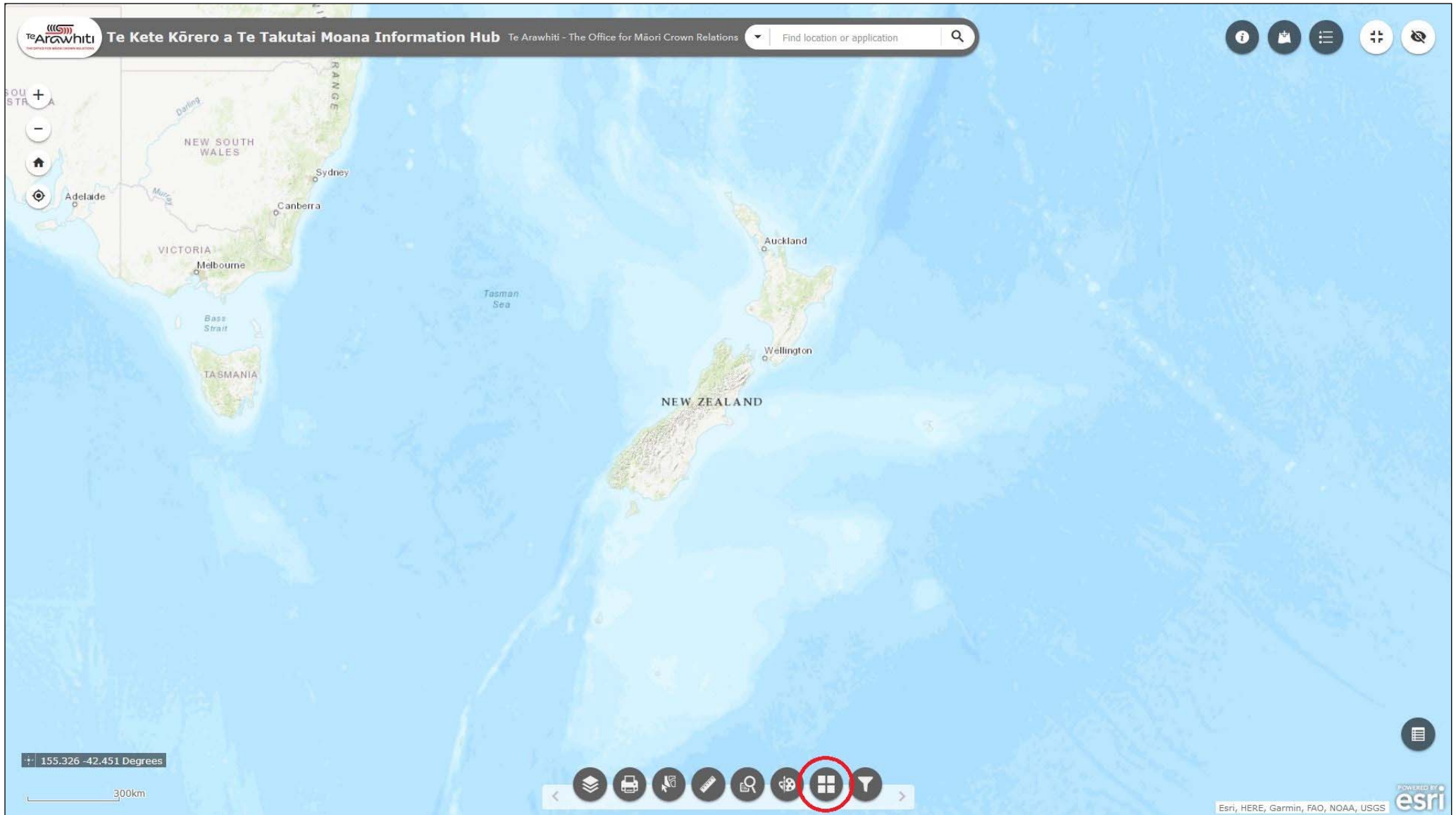
How to Change the Basemap



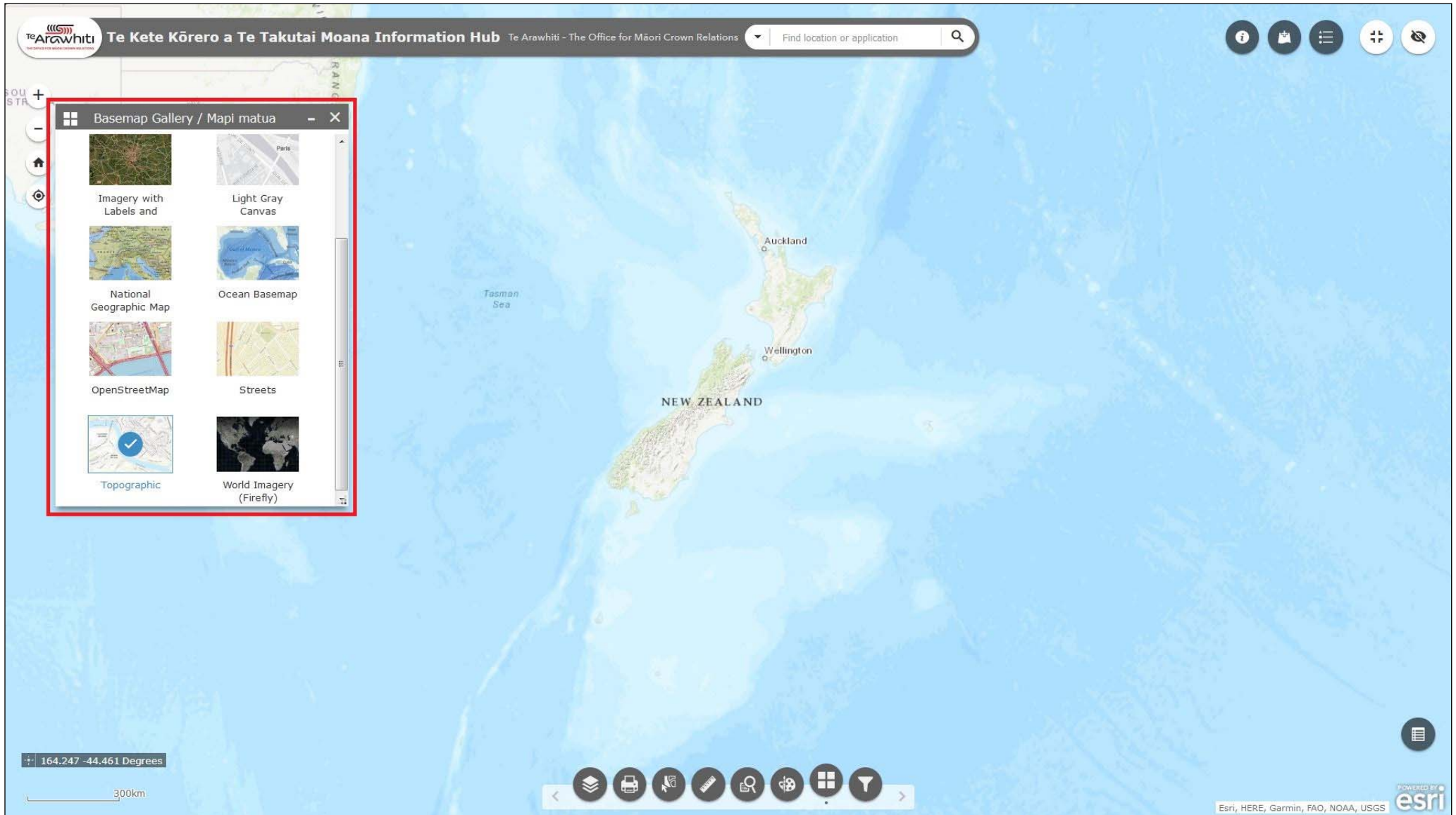
How to Change the Basemap



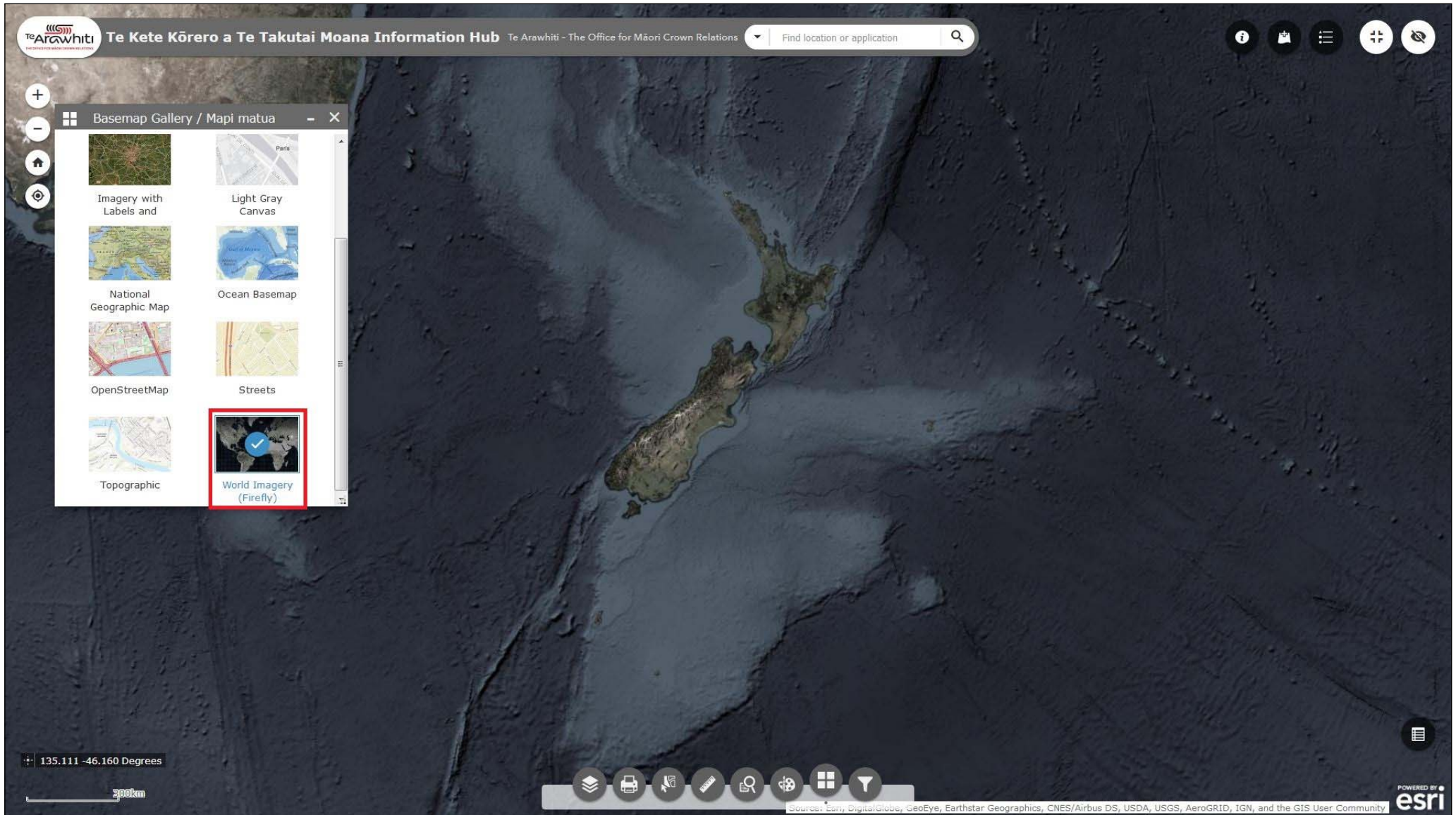
The basemap is the underlying map onto which other data is overlaid. Kōrero Takutai allows you switch between a number of different basemaps.



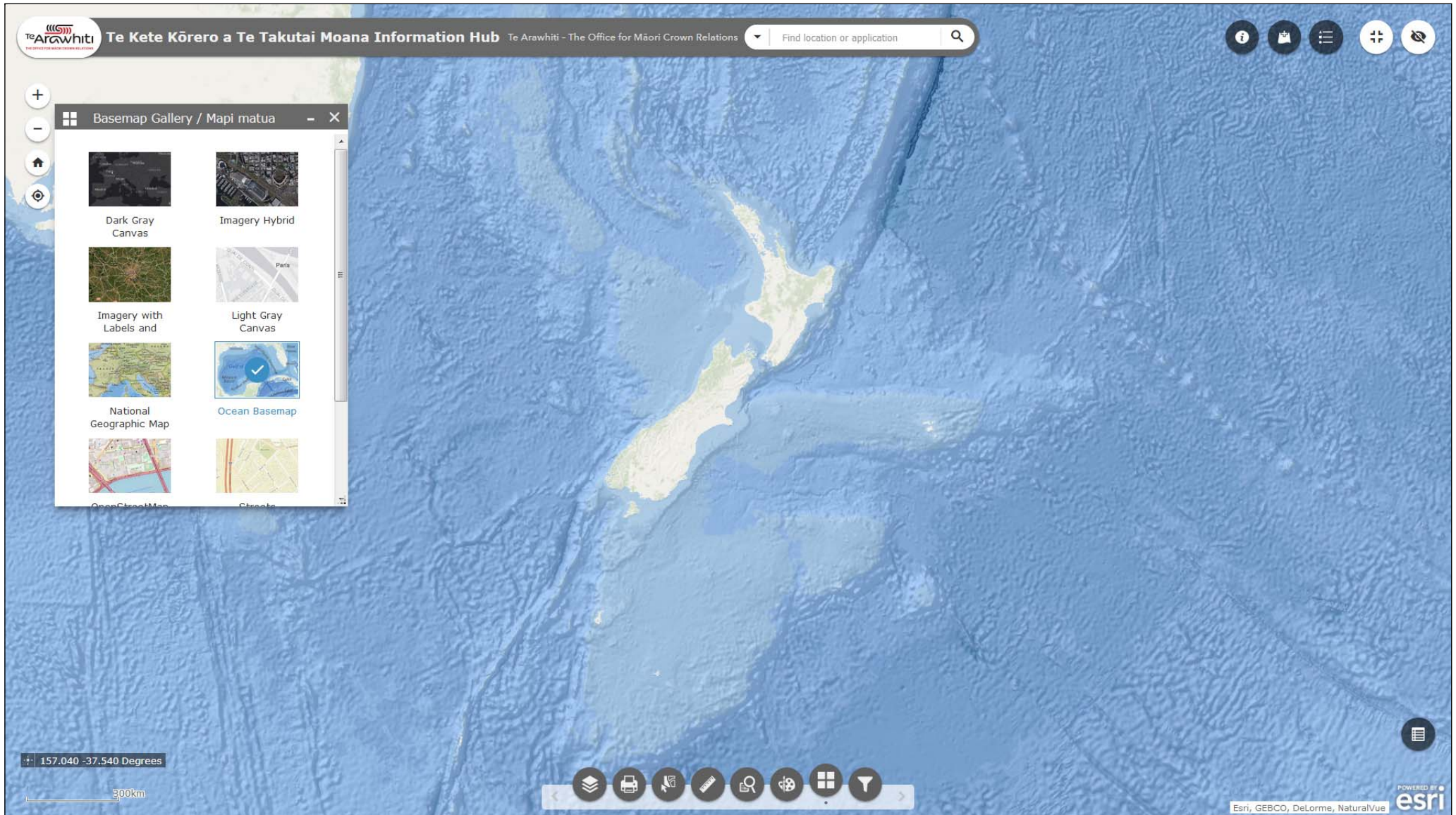
1. Click the 'Basemap Gallery' icon. It's second-to-last at the bottom.



2. The Basemap Gallery window will open. This allows you to browse available basemaps. The currently selected basemap is indicated by a blue tick. In the image the 'Topographic' basemap is currently selected.



3. Select a different basemap simply by clicking on one of the other options in the Basemap Gallery. In the image the basemap has been changed to 'World Imagery (Firefly)'.



Certain basemaps suit certain types of data. For example, we have found a satellite imagery basemap works well with resource consents, whereas a topographic basemap is useful for displaying application areas. Please experiment with different basemaps and find those that work well with the data you want to display.