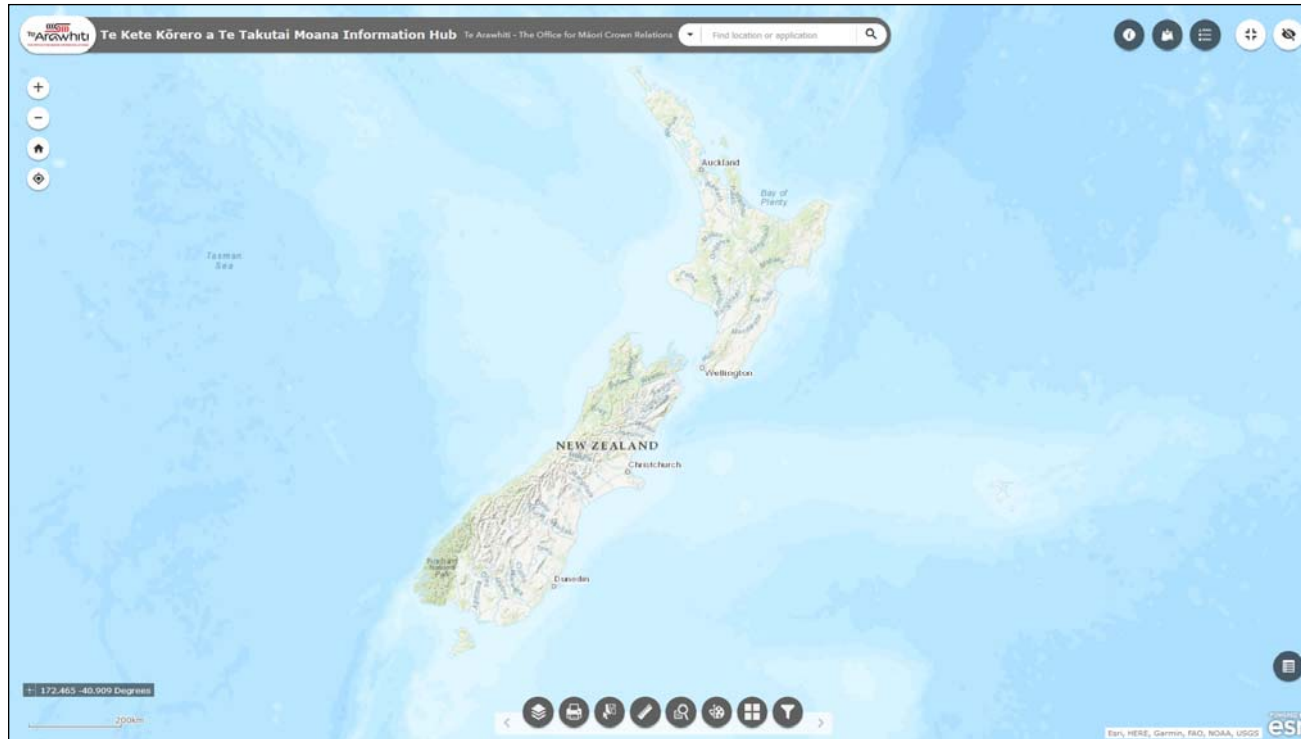


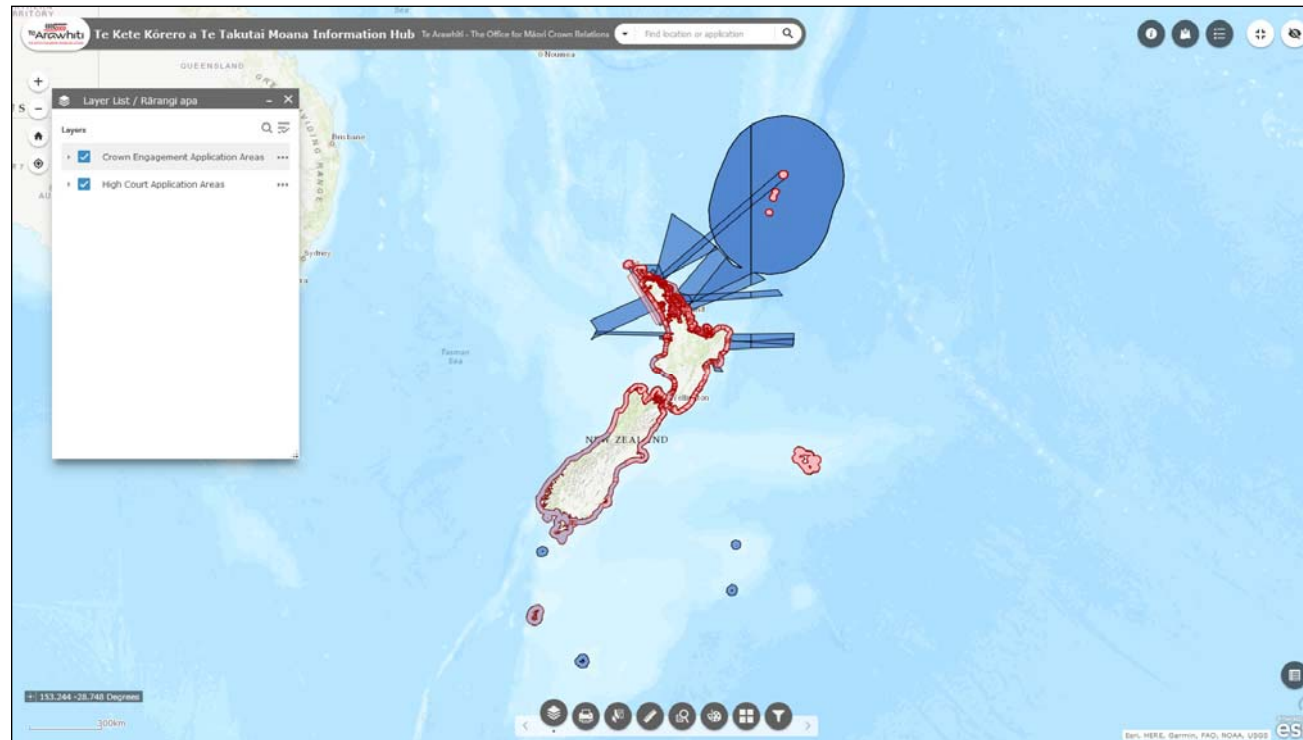
Te Kete Kōrero a Te Takutai Moana



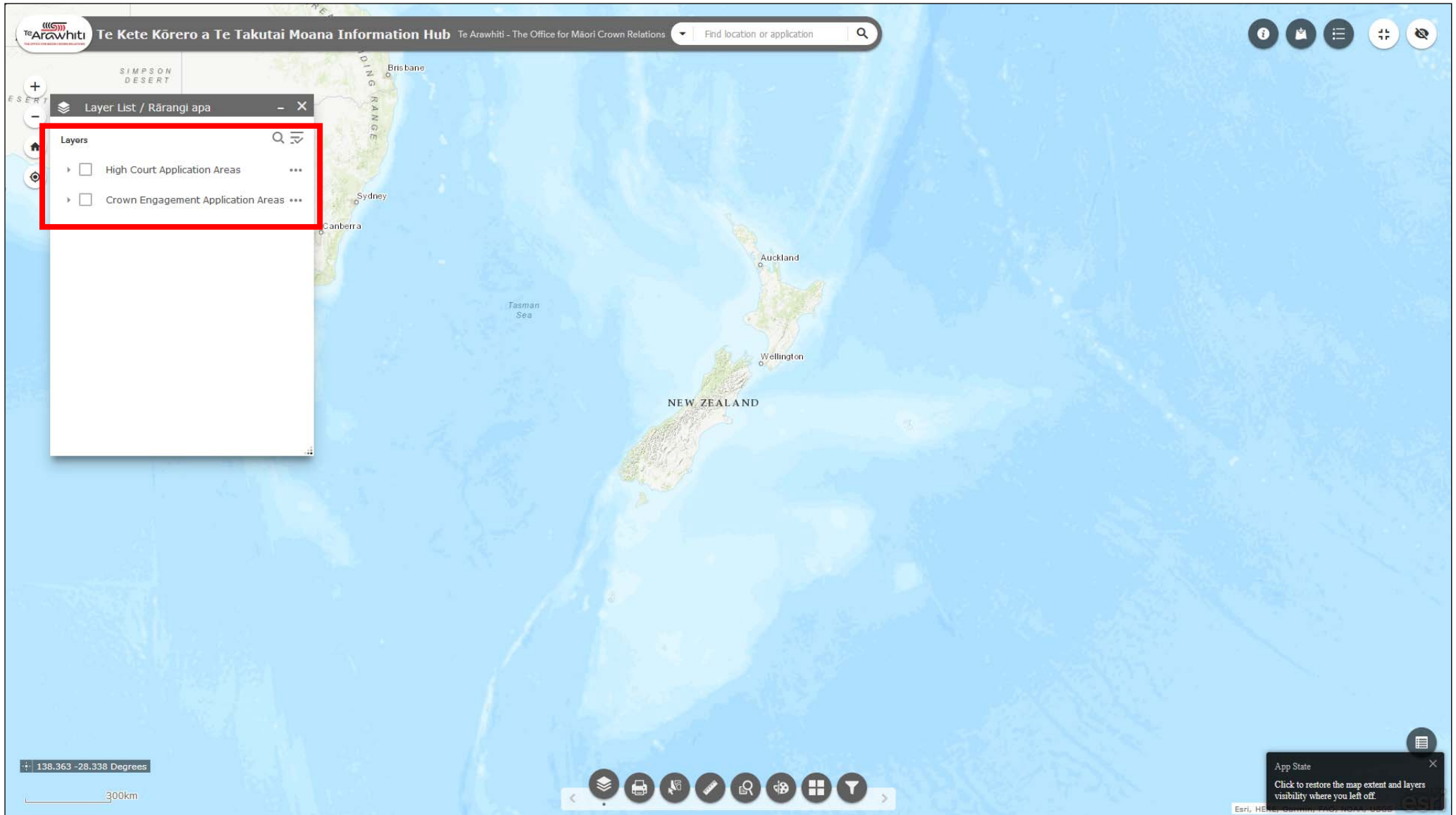
How to Understand the Application Area Layers



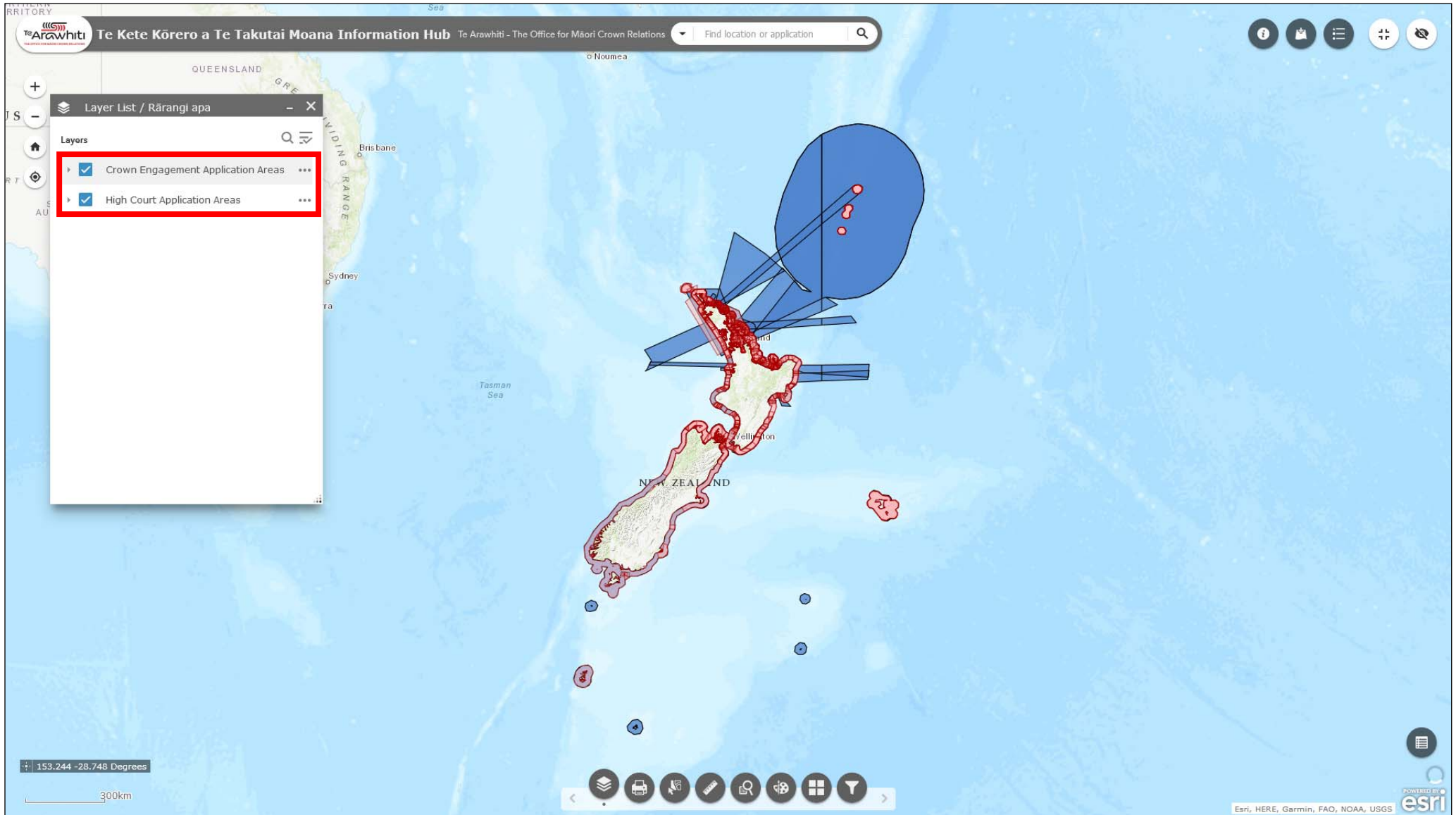
How to Understand the Application Area Layers



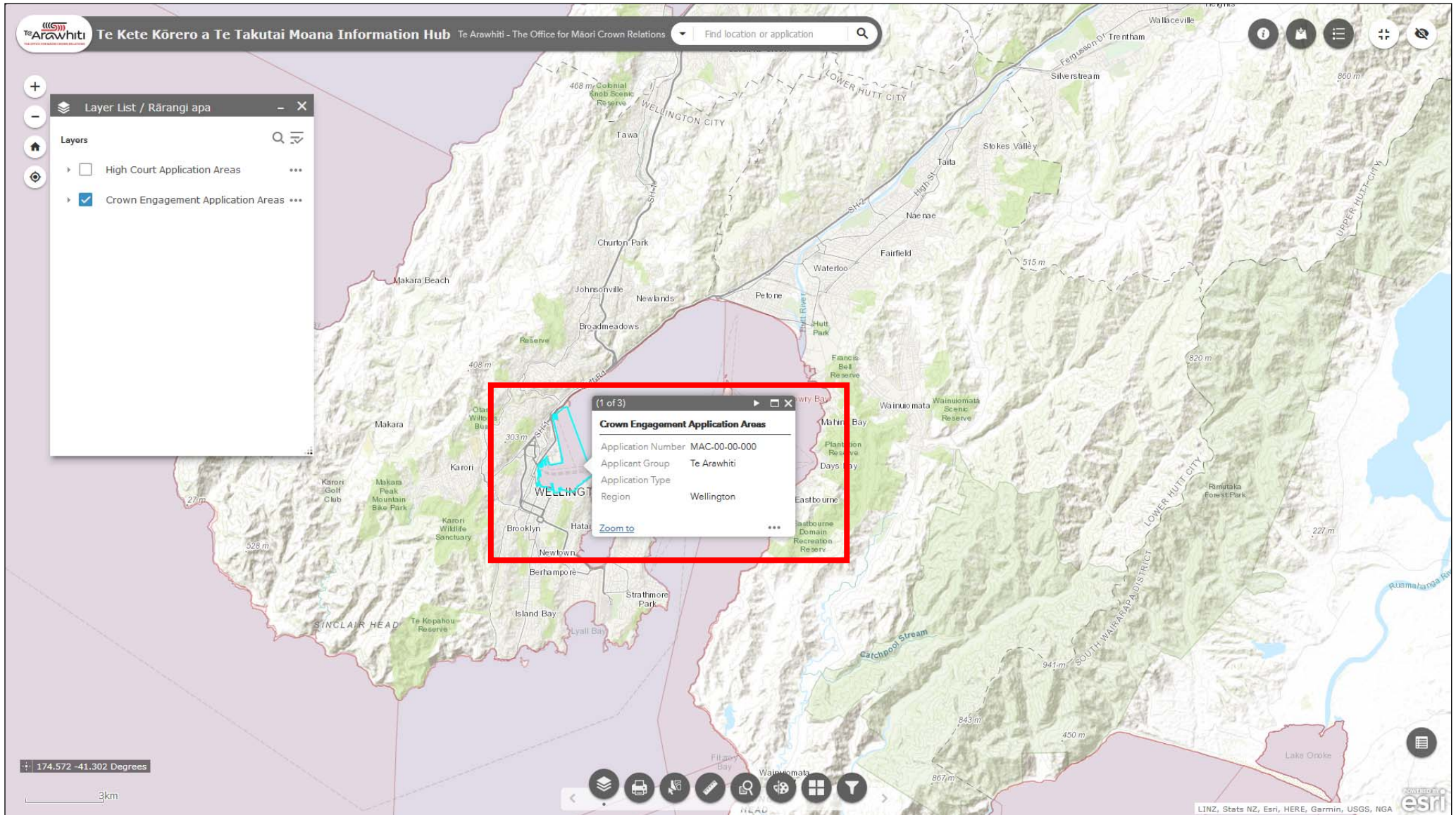
This helpfile provides a basic introduction to the application area layers in Kōrero Takutai.



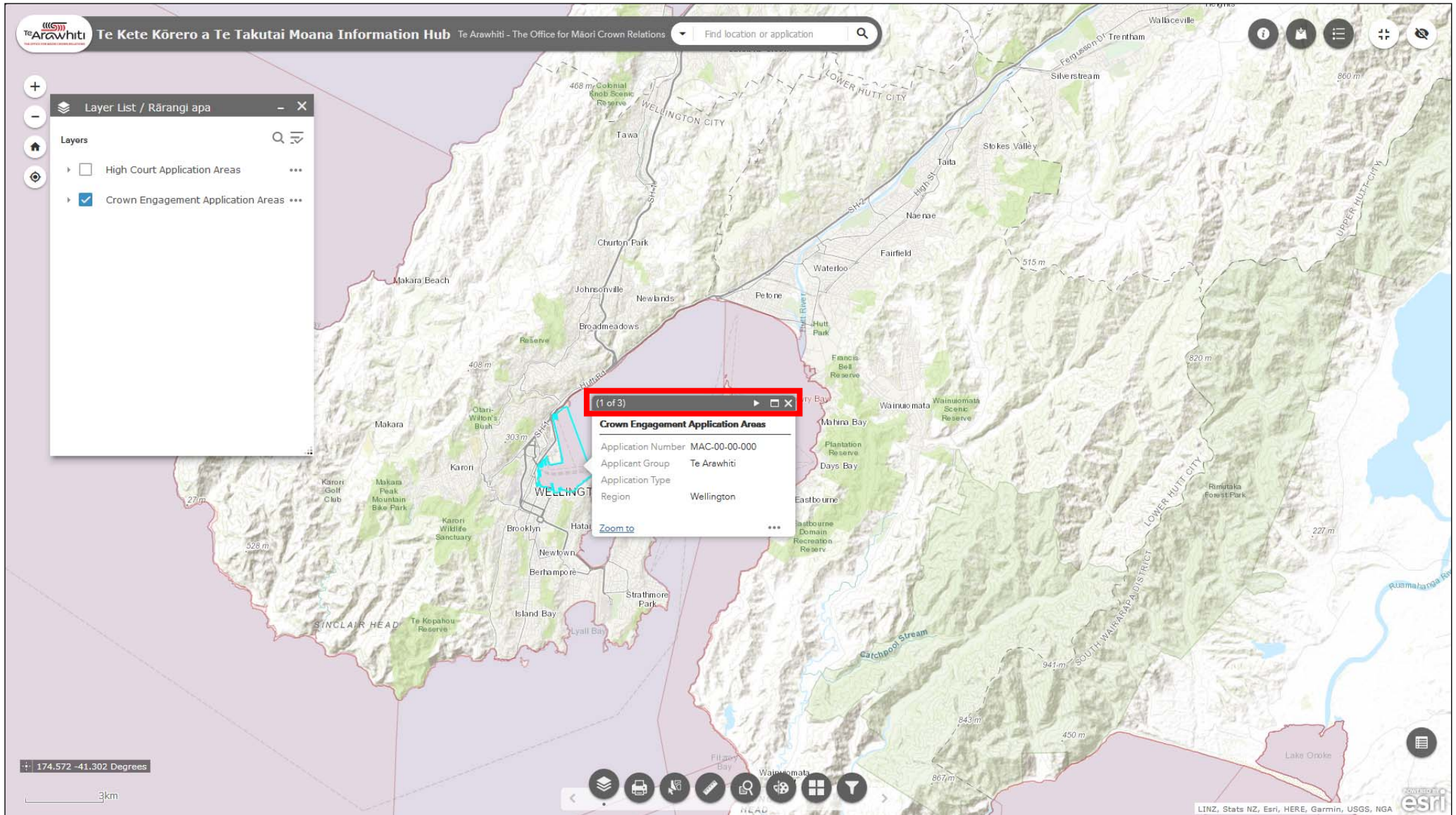
1. There are two application areas in Kōrero Takutai. One for applications in the High Court stream, and one for applications in the Crown Engagement stream.



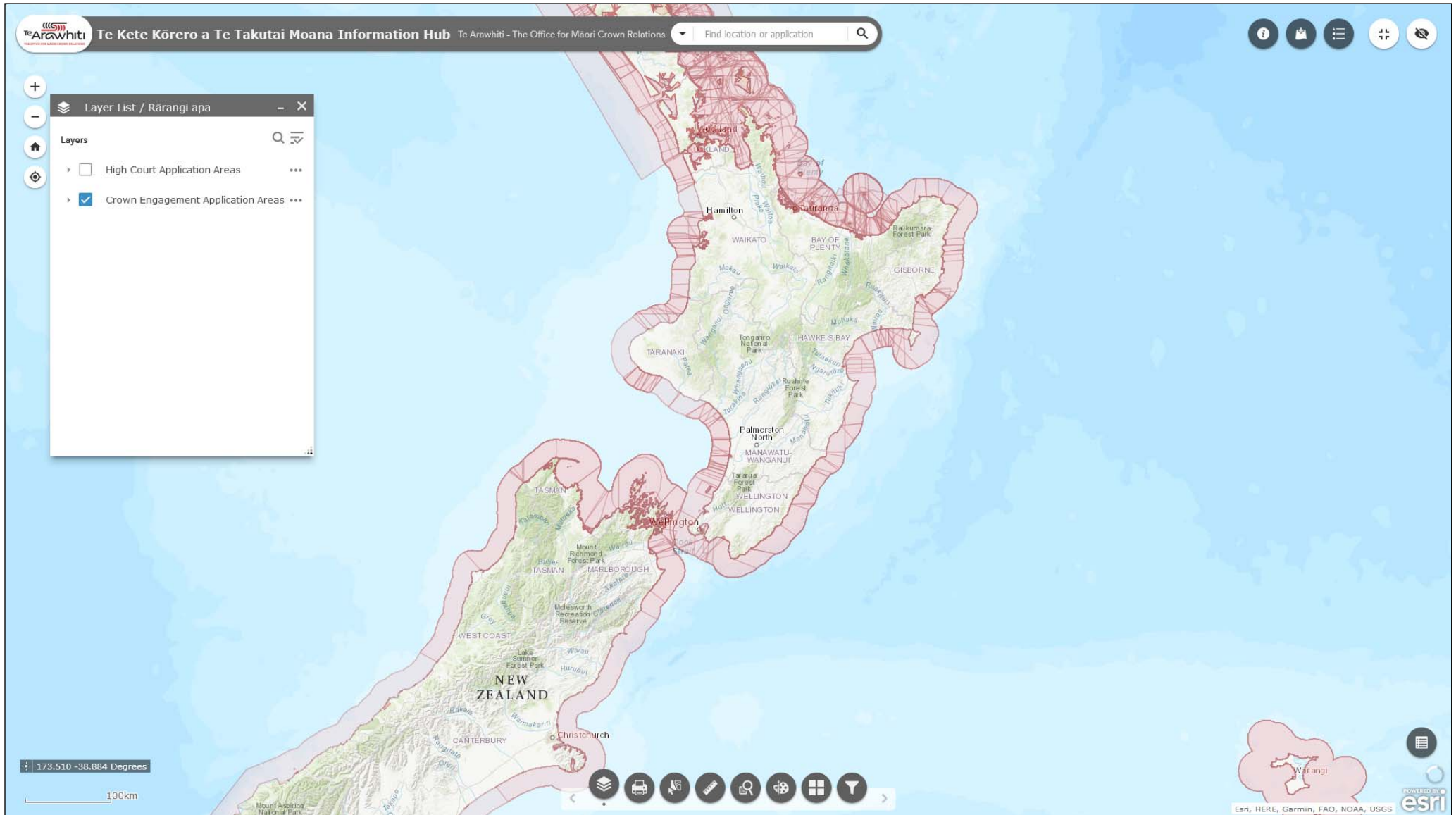
2. The two application area layers are loaded into the Layer List by default. You can turn them on using the checkbox to the left.



If you click on an application area you will notice that a pop-up appears. This contains more information about the application such as the application number and applicant group.



4. If a given area includes multiple applications you can cycle through the pop-ups using the arrows at the top of the box.



5. You will notice that the colours become darker the more overlapping applications there are.

You can use the Query tool to refine the application area layers. Please see the 'Find an application area', 'Find overlapping applications' and 'Display applications by region' helpfiles for more information on this.