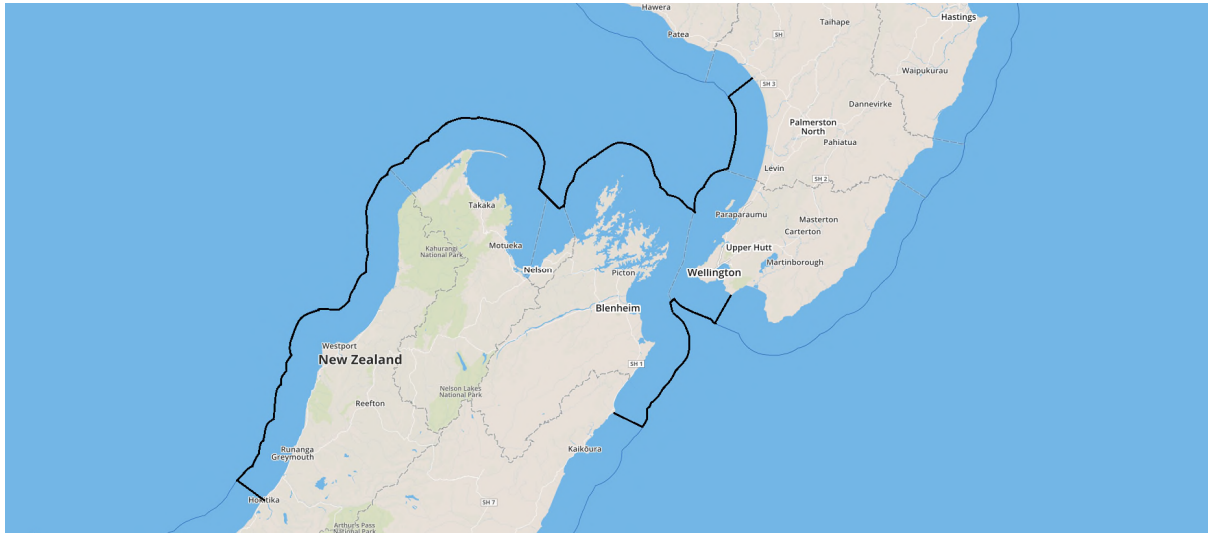


Te Rūnanga o Toa Rangatira application area

Note: All maps below are only indicative guides to the application area described, and do not necessarily show its exact boundaries.

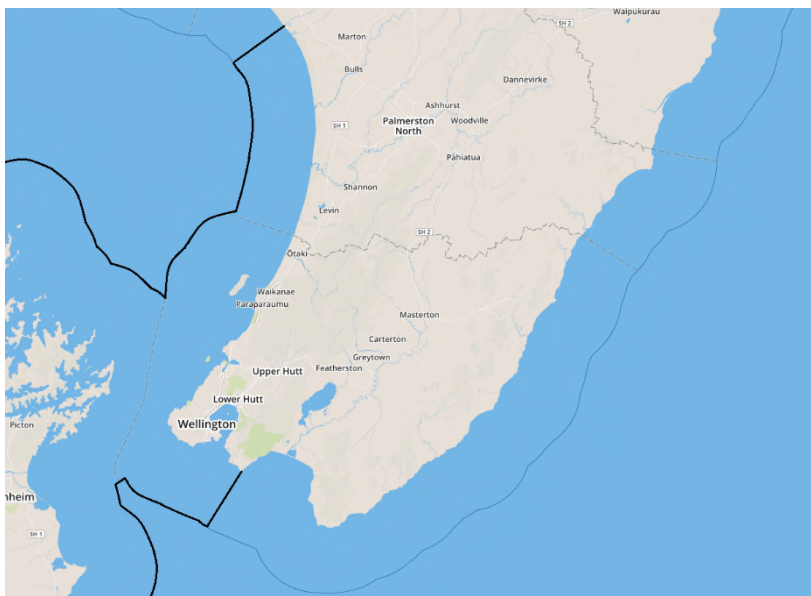
Whole application area – North and South Islands



12 nautical miles out from the following four points:

- a The mouth of the Whangaehu River to the north-west;
- b Turakirae Head to the east;
- c The mouth of the Hokitika River to the south-west; and
- d The mouth of Waiiau Toa / Clarence River to the south-east.

Coast of North Island – close-up



APPENDIX 1 – Area of Interest. Area of application is to seaward of area illustrated.



Original map of application area

Mouth of the Whangaehu River



12 nautical miles out from the mouth of the Whangaehu River.

Turakirae Head



12 nautical miles out from the coastline by Turakirae Head.

Mouth of the Hokitika River



12 nautical miles out from the mouth of the Hokitika River.

Mouth of Waiau Toa / Clarence River



12 nautical miles out from the mouth of Waiau Toa / Clarence River.