

NGĀTI PAOA
and
THE TRUSTEES OF THE NGĀTI PAOA IWI TRUST
and
THE CROWN

DEED OF SETTLEMENT SCHEDULE:
ATTACHMENTS

ATTACHMENTS

TABLE OF CONTENTS

1 AREA OF INTEREST..... 1

2 DEED PLANS 3

3 DRAFT SETTLEMENT BILL..... 34

ATTACHMENTS

1 AREA OF INTEREST

ATTACHMENTS

1: AREA OF INTEREST



ATTACHMENTS

2 DEED PLANS

ATTACHMENTS

2: DEED PLANS

Statutory areas

- Kiripaka Wildlife Scenic Reserve (OTS-403-268)
- Mangatawhiri Forest Conservation Area (OTS-403-275)
- Matietie Historic Reserve (OTS-403-262)
- Mutukaroa / Hamlin Hill (OTS-403-269)
- Ngahue Reserve (OTS-403-267)
- Paparimu Conservation Area (OTS-403-272)
- Pūkorokoro / Miranda Scenic Reserve (OTS-403-271)
- Pūkorokoro / Miranda Scientific Reserve (OTS-403-277)
- Richard Sylvan Memorial Scenic Reserve (OTS-403-273)
- Ruapotaka Reserve (OTS-403-270)
- Te Matuku Bay Scenic Reserve (OTS-403-266)
- Te Morehu Scenic Reserve (OTS-403-263)
- Vining Scenic Reserve (OTS-403-274)

Overlay areas

- Pūkorokoro / Miranda Taramaire Government Purpose Reserve Wildlife Management Area (OTS-403-261)
- Te Haupa Island Scenic Reserve (OTS-403-260)

Vest and vest back areas

- Pūkorokoro / Miranda Taramaire Government Purpose Reserve Wildlife Management Area (OTS-403-278)
- Te Haupa Island Scenic Reserve (OTS-403-279)

Cultural redress properties

- Hine-nui-o-te-paua (OTS-403-280)
- Kaiaua School property (OTS-403-251)
- Māwhitipana (OTS-403-276)
- Omaru (OTS-403-281)
- Paoa Ururoa (OTS-403-256)
- Paoa Ururua (OTS-403-257)
- Paoa Whanake (OTS-403-255)
- Papakura Pā (OTS-403-254)
- Pokai Wawahi Ika (OTS-403-253)
- Tauwhare Koiora site A (OTS-403-252)
- Tauwhare Koiora site B (OTS-403-252)
- Te Iwi Rahirahi (OTS-403-258)
- Te Waero Awe Houkura (OTS-403-259)

ATTACHMENTS

2: DEED PLANS



ATTACHMENTS

2: DEED PLANS



ATTACHMENTS

2: DEED PLANS

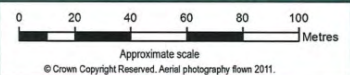


Vest Fee Simple



Section 1

2.2530 hectares, more or less, being Section 1 SO 495060 (formerly known as parts of Lots 76, 77, 78, and 79 DP 10723).



OTS-403-253

North Auckland Land District
Territorial Authority: Auckland Council
Compiled as a graphic representation.
Boundaries are indicative only.



PART OF THE MINISTRY OF JUSTICE

Pokai Wawahi Ika

Areas referred to in the deed of settlement between
Ngāti Paoa and the Crown

Approved as to boundaries:
[Signature]
for Ngāti Paoa 31.5.17.

[Signature] 31.5.17
for and on behalf of the Crown

ATTACHMENTS

2: DEED PLANS



ATTACHMENTS

2: DEED PLANS



ATTACHMENTS

2: DEED PLANS



ATTACHMENTS

2: DEED PLANS



ATTACHMENTS

2: DEED PLANS



0 20 40 60 80 100 Metres
 Approximate scale
 © Crown Copyright Reserved. Aerial photography flown 2011.

0.5975 hectares, more or less, being Lot 1 DP 335144.

OTS-403-258

North Auckland Land District
 Territorial Authority: Auckland Council
 Compiled as a graphic representation.
 Boundaries are indicative only.

Office of Treaty Settlements
 Te Kaitiaki Take Kōwhiri
 141, Te Wharekōwhiri
 PART OF THE MINISTRY OF JUSTICE

Te Iwi Rahirahi

Areas referred to in the deed of settlement between Ngāti Paoa and the Crown

Approved as to boundaries:

 for Ngāti Paoa 31.5.17

for and on behalf of the Crown

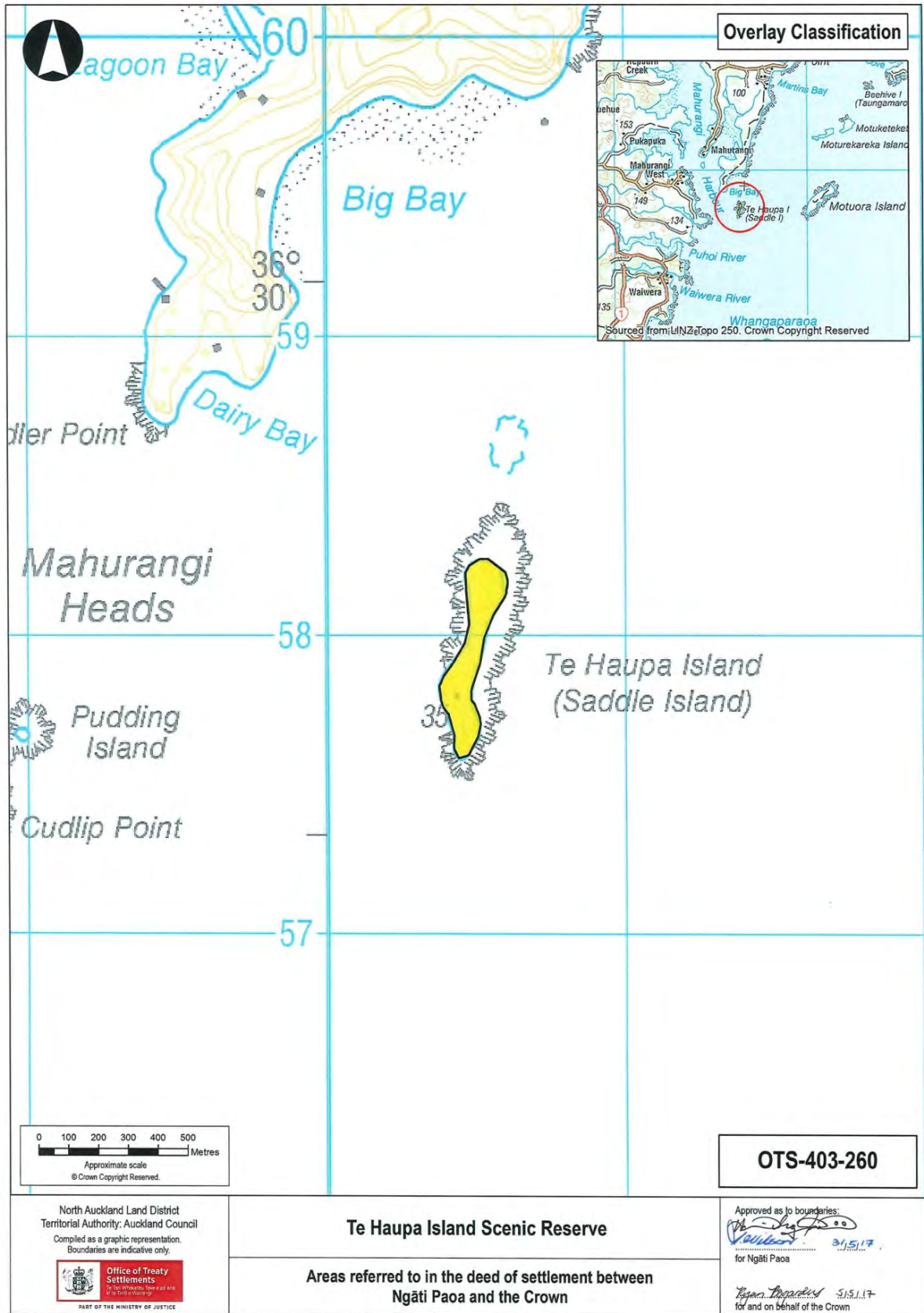
ATTACHMENTS

2: DEED PLANS



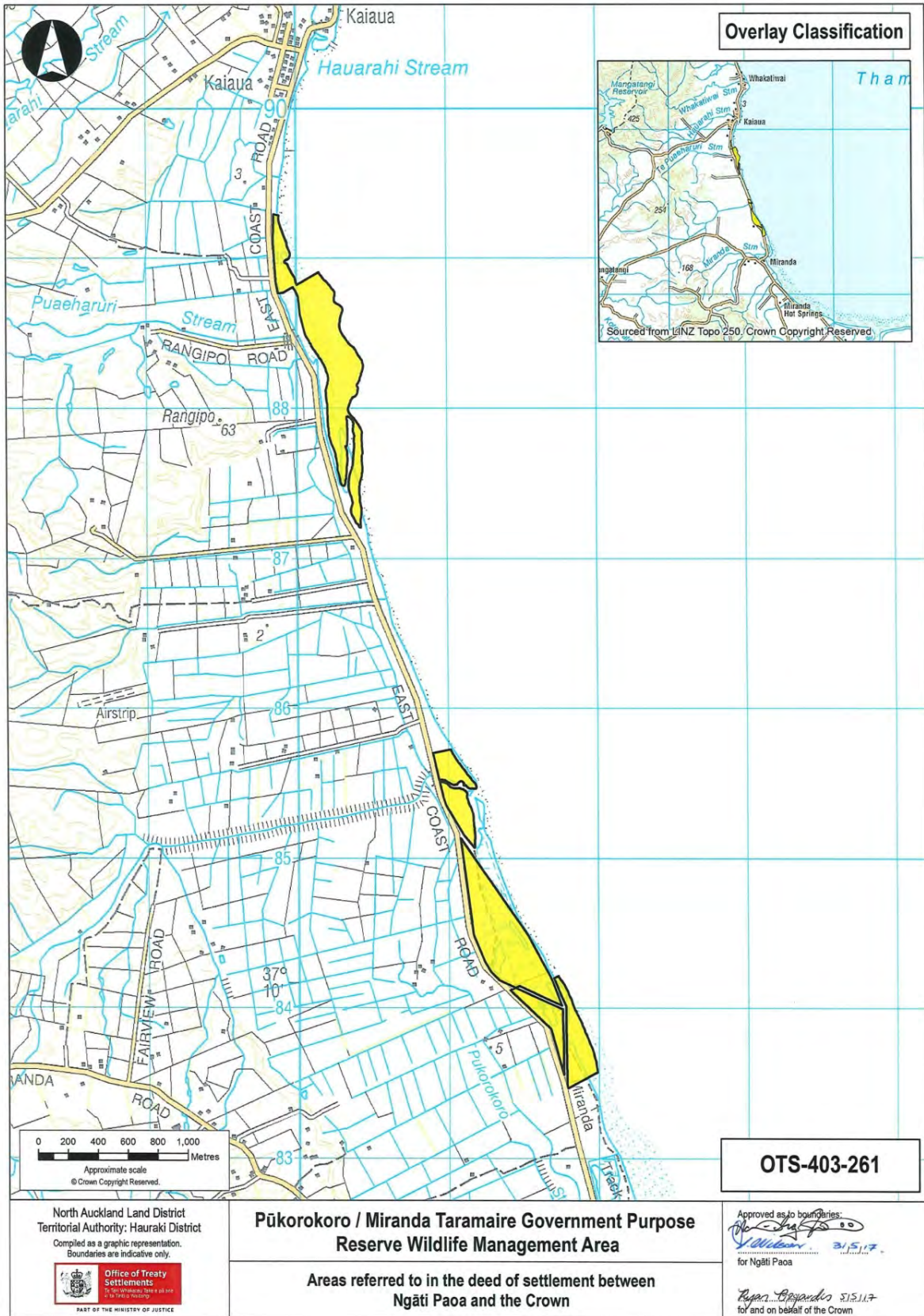
ATTACHMENTS

2: DEED PLANS



ATTACHMENTS

2: DEED PLANS



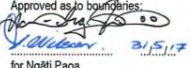
North Auckland Land District
 Territorial Authority: Hauraki District
 Compiled as a graphic representation.
 Boundaries are indicative only.


 Office of Treaty Settlements
 100, The Terrace, Auckland 1010
 09 309 3200
 www.otss.govt.nz


PART OF THE MINISTRY OF JUSTICE

Pūkoro / Miranda Taramaire Government Purpose Reserve Wildlife Management Area

Areas referred to in the deed of settlement between
 Ngāti Paoa and the Crown

Approved as to boundaries:

 for Ngāti Paoa

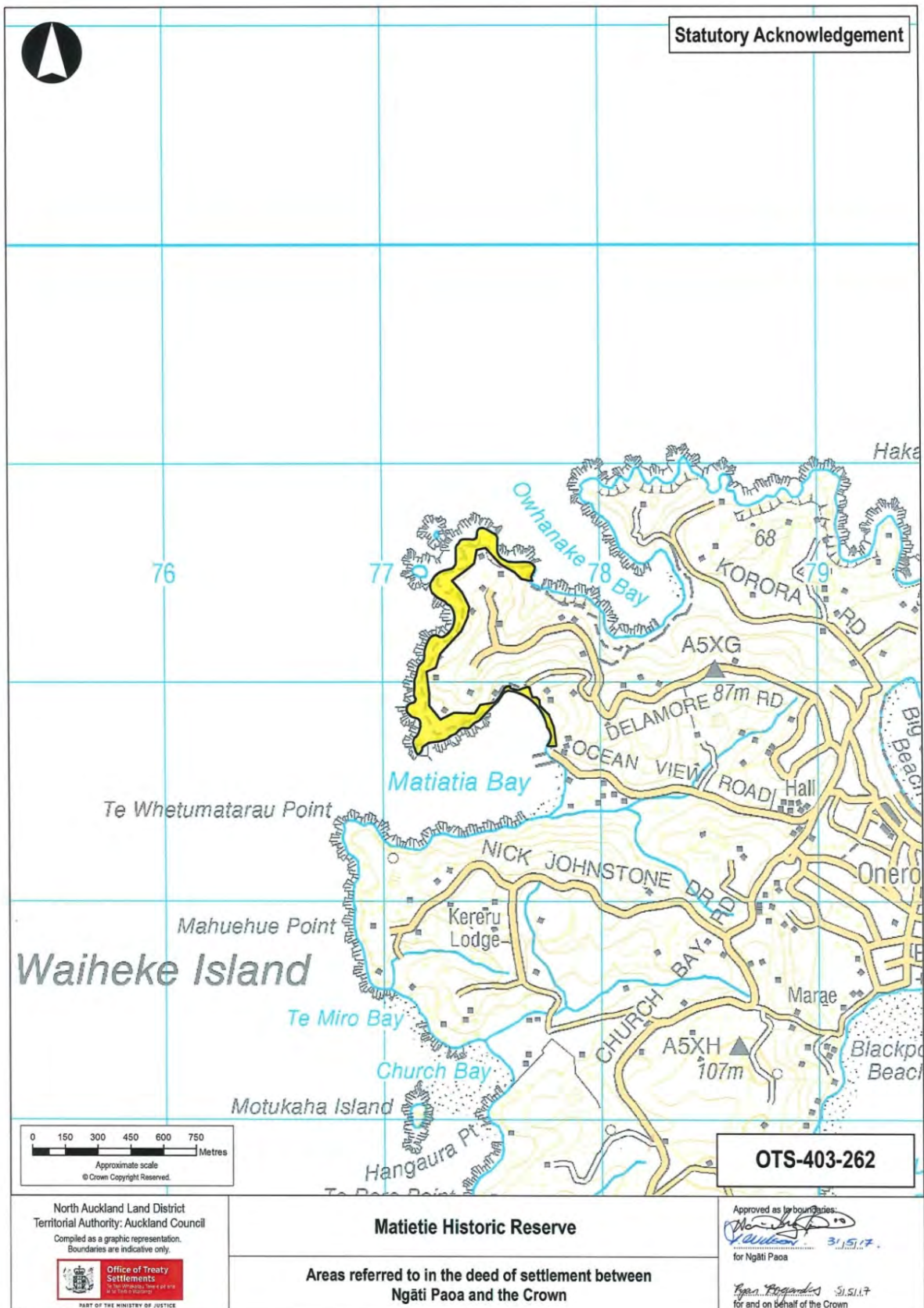
31.5.17

Approved as to boundaries:

 for and on behalf of the Crown

OTS-403-261

ATTACHMENTS

2: DEED PLANS



North Auckland Land District
 Territorial Authority: Auckland Council
 Compiled as a graphic representation.
 Boundaries are indicative only.

Office of Treaty Settlements
 PART OF THE MINISTRY OF JUSTICE

Matietie Historic Reserve

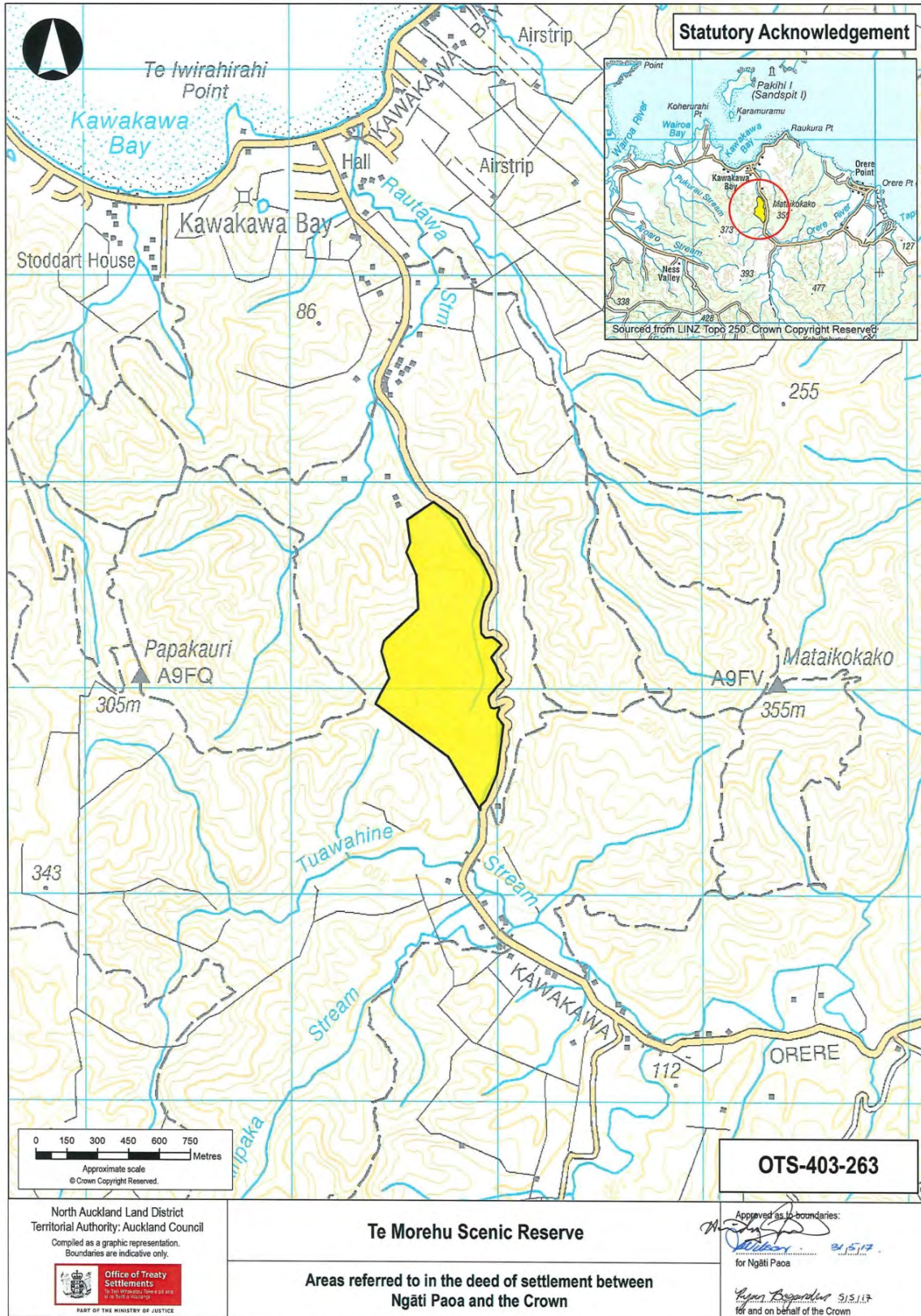
Areas referred to in the deed of settlement between
 Ngāti Paoa and the Crown

Approved as to boundaries:
[Signature] 31.5.17
 for Ngāti Paoa

[Signature] 31.5.17
 for and on behalf of the Crown

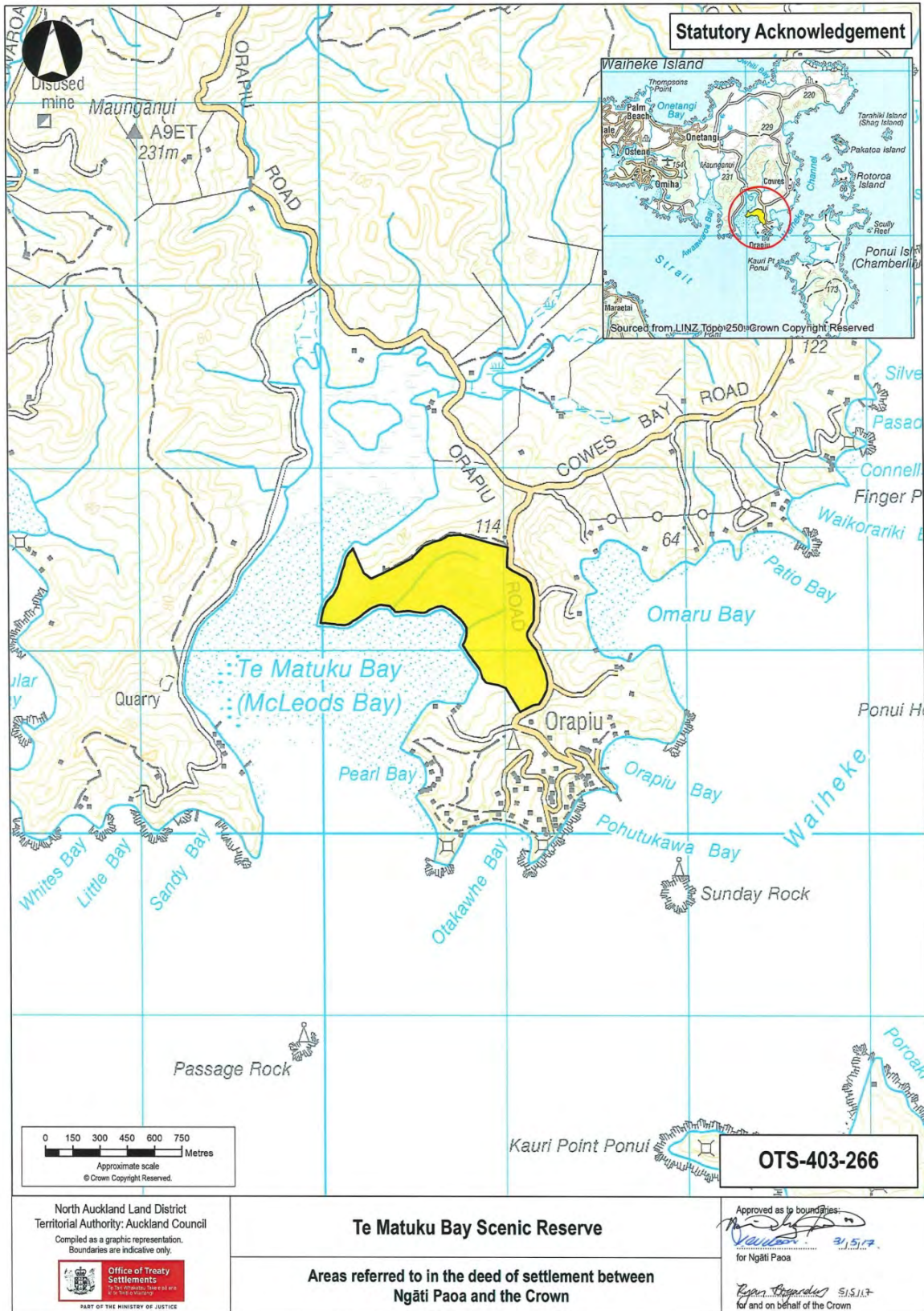
ATTACHMENTS

2: DEED PLANS



ATTACHMENTS

2: DEED PLANS



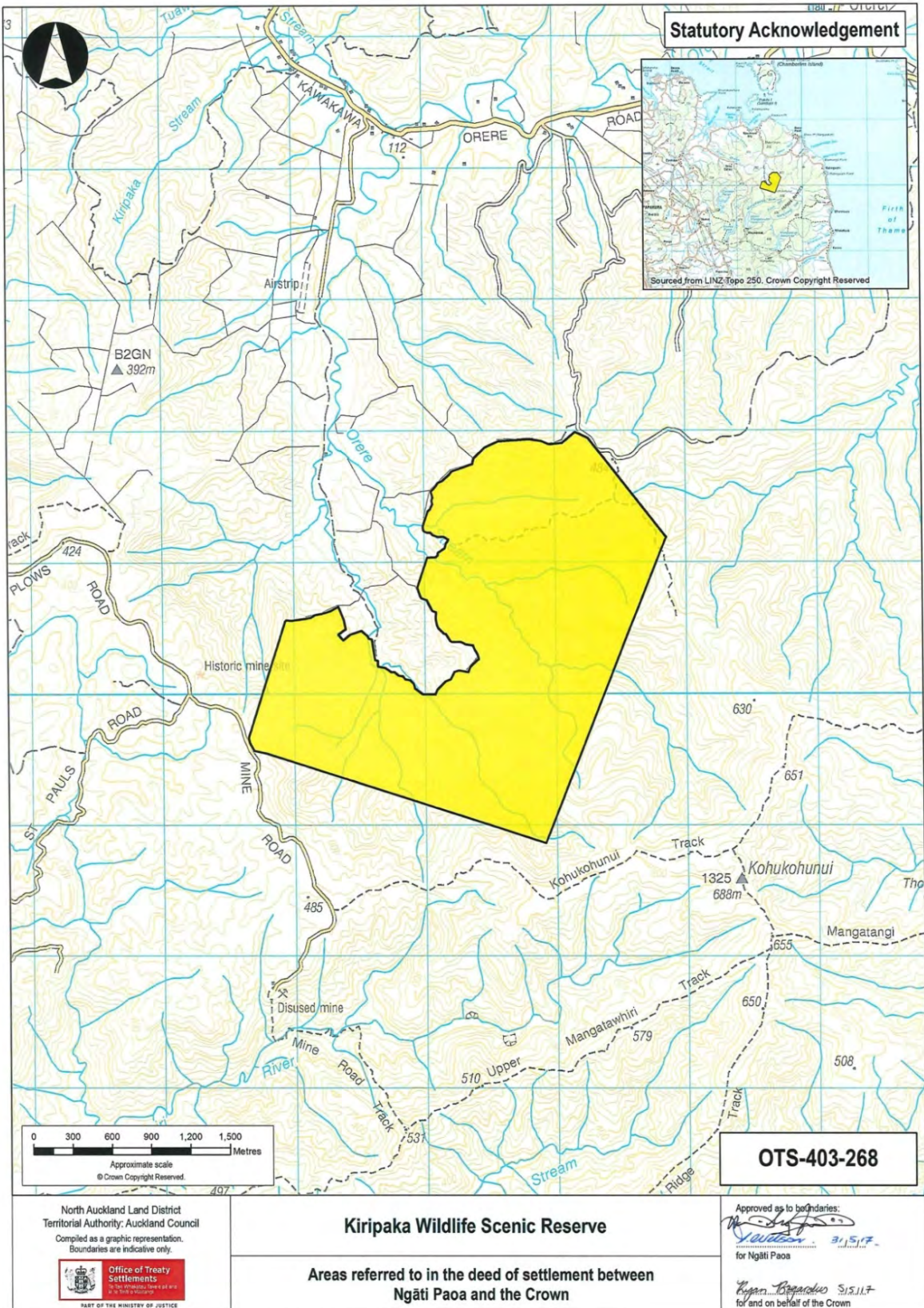
ATTACHMENTS

2: DEED PLANS



ATTACHMENTS

2: DEED PLANS



ATTACHMENTS

2: DEED PLANS



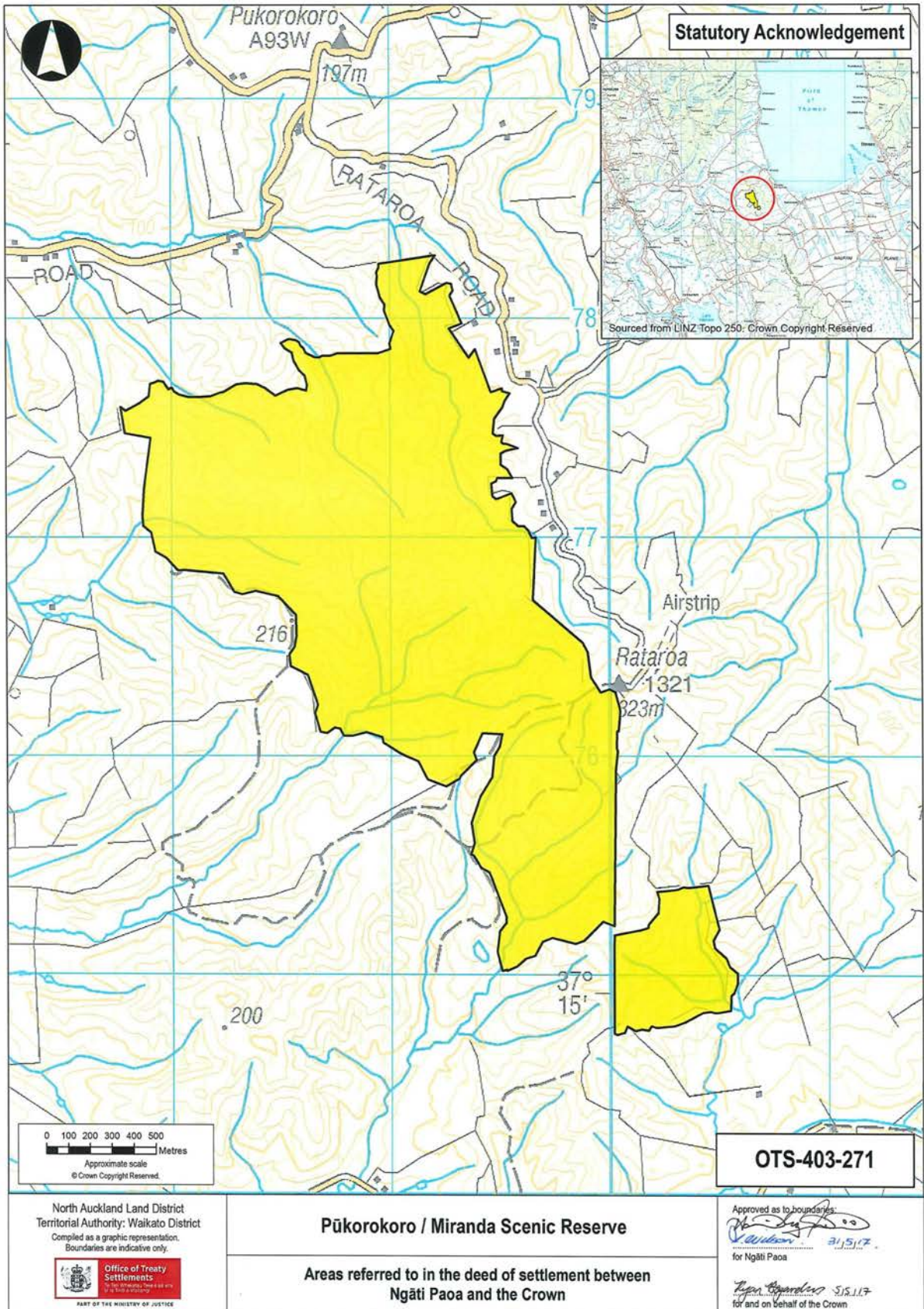
ATTACHMENTS

2: DEED PLANS



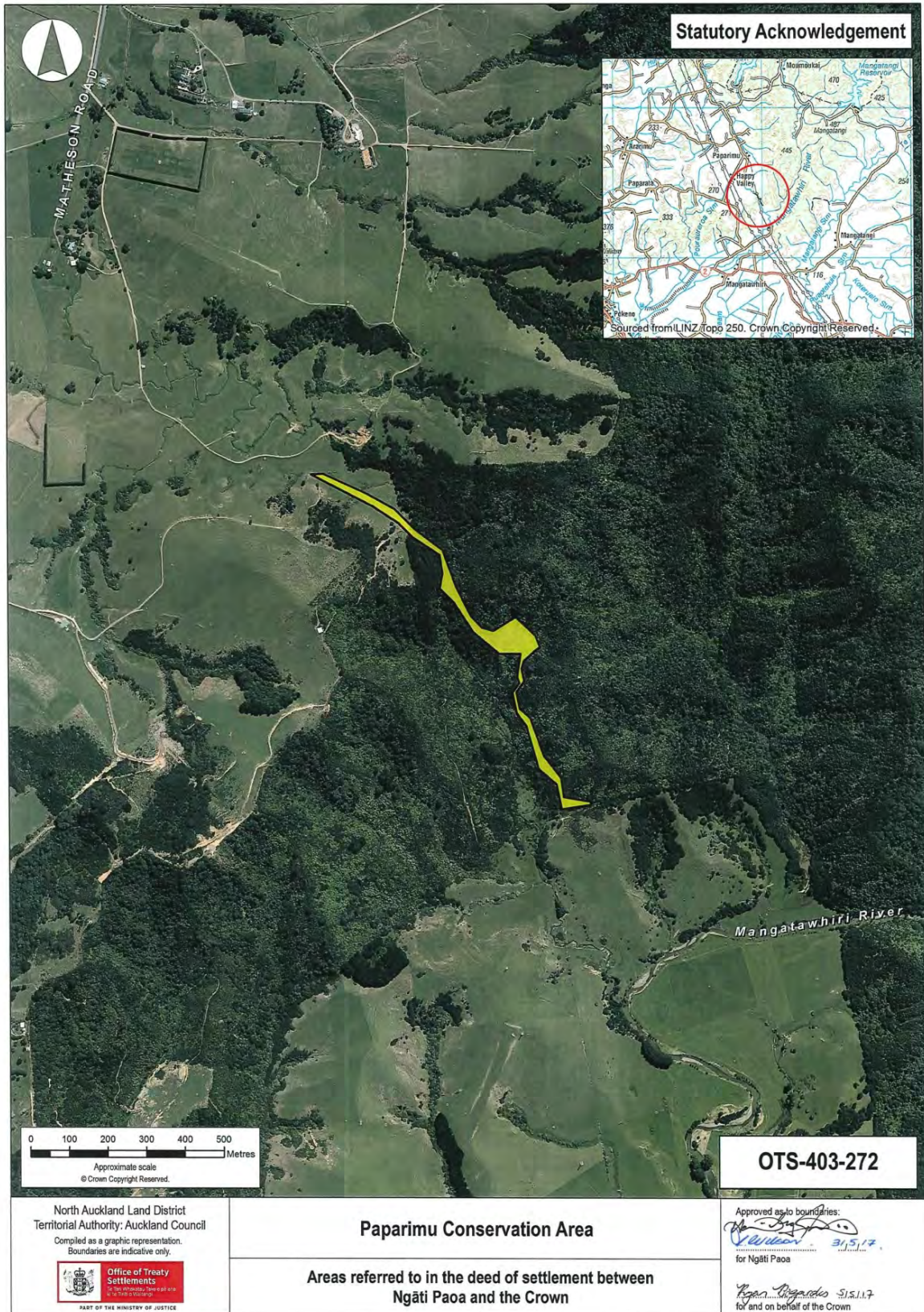
ATTACHMENTS

2: DEED PLANS



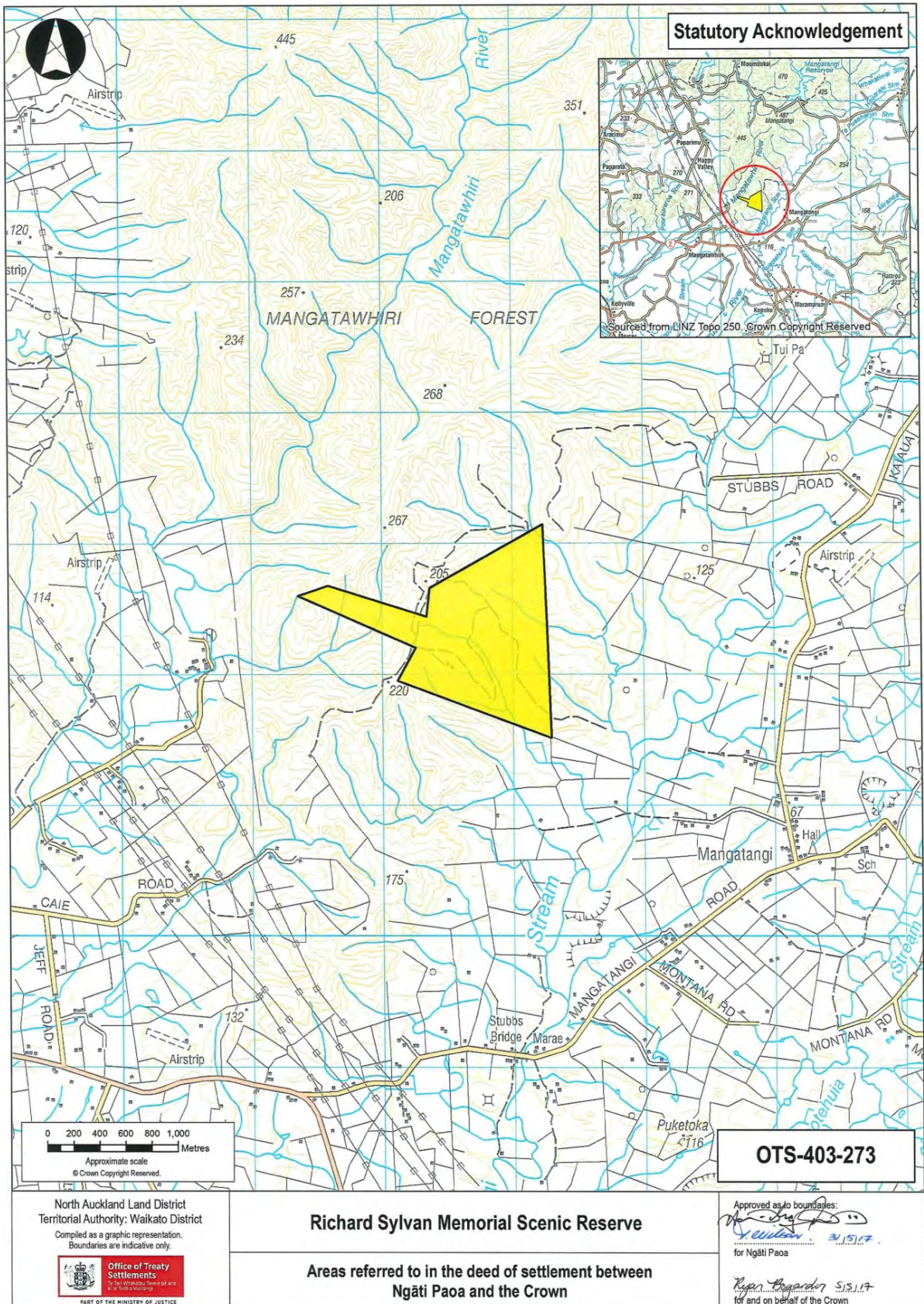
ATTACHMENTS

2: DEED PLANS



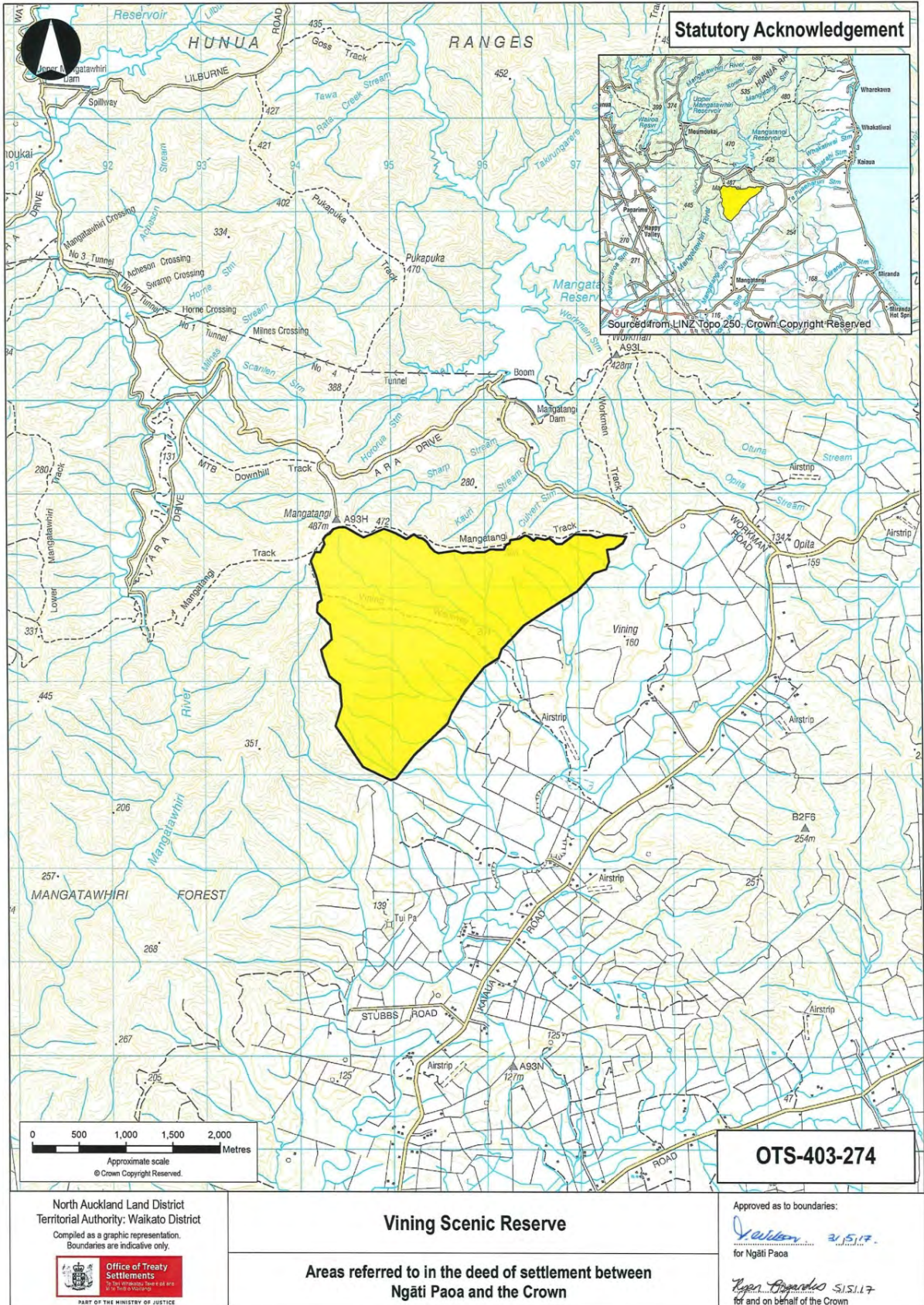
ATTACHMENTS

2: DEED PLANS



ATTACHMENTS

2: DEED PLANS



North Auckland Land District
Territorial Authority: Waikato District
Compiled as a graphic representation.
Boundaries are indicative only.



Vining Scenic Reserve

Areas referred to in the deed of settlement between
Ngāti Paoa and the Crown

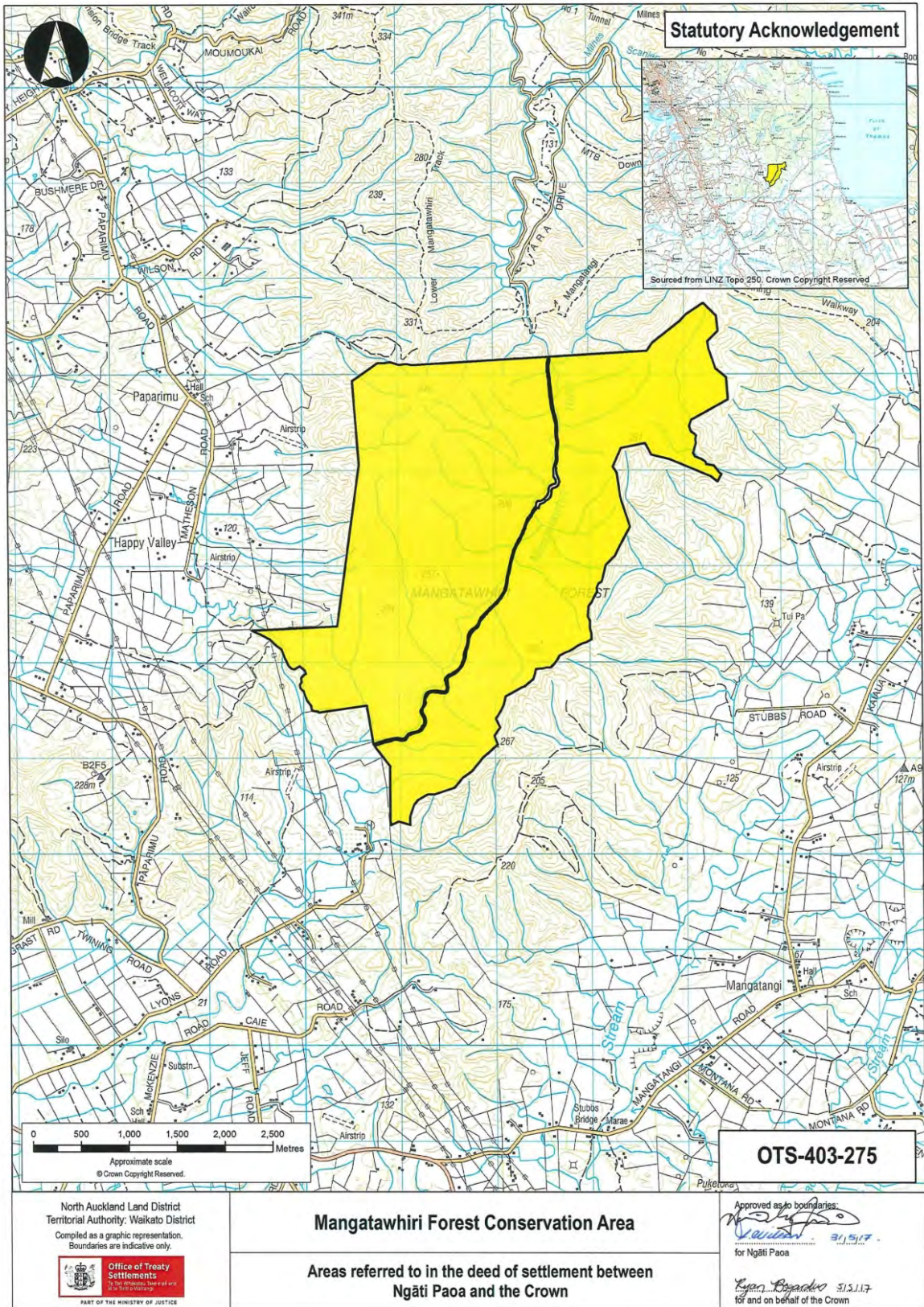
Approved as to boundaries:

J. Wilson 21/5/17
for Ngāti Paoa

Ryan O'Rourke 21/5/17
for and on behalf of the Crown

ATTACHMENTS

2: DEED PLANS



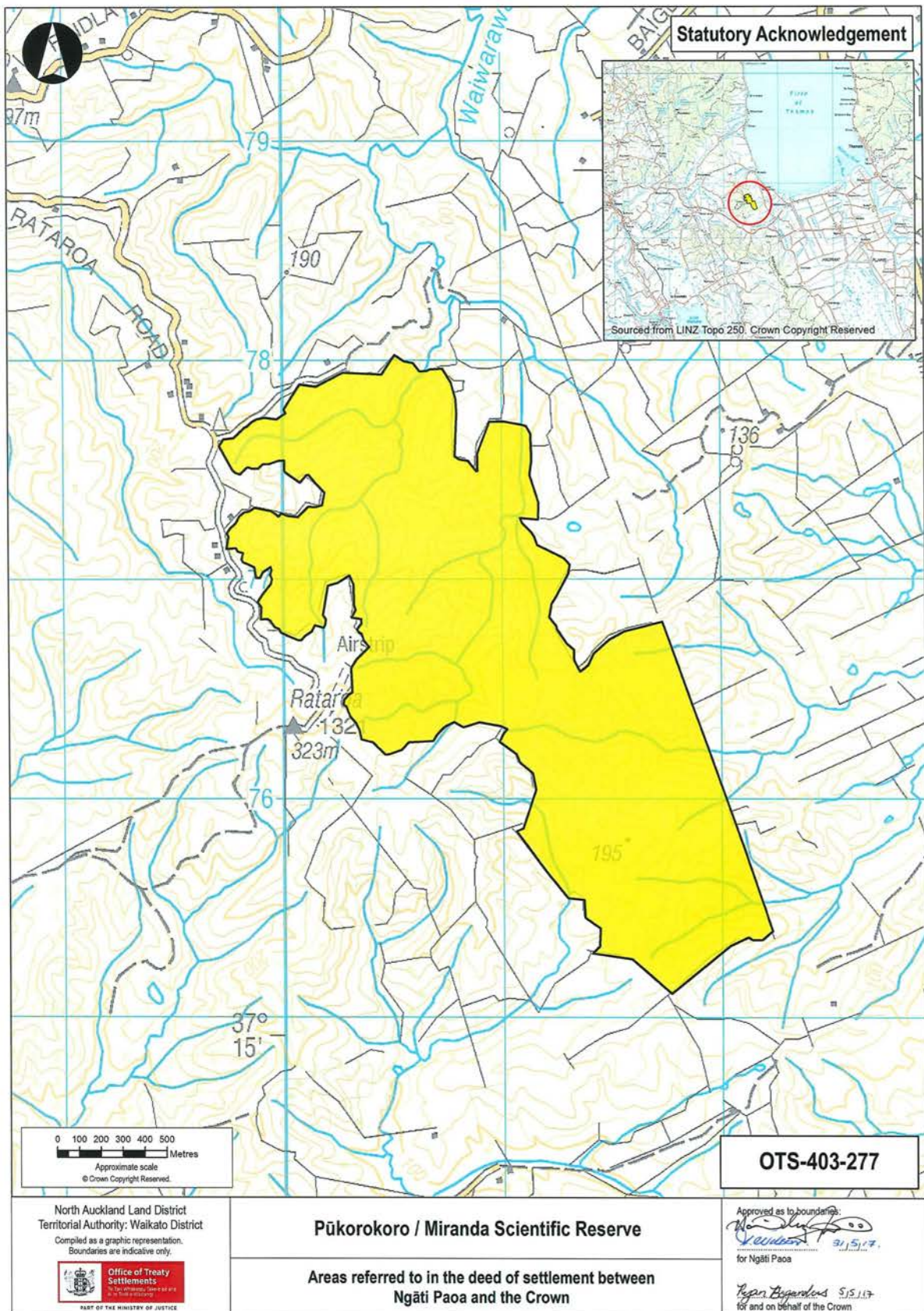
ATTACHMENTS

2: DEED PLANS



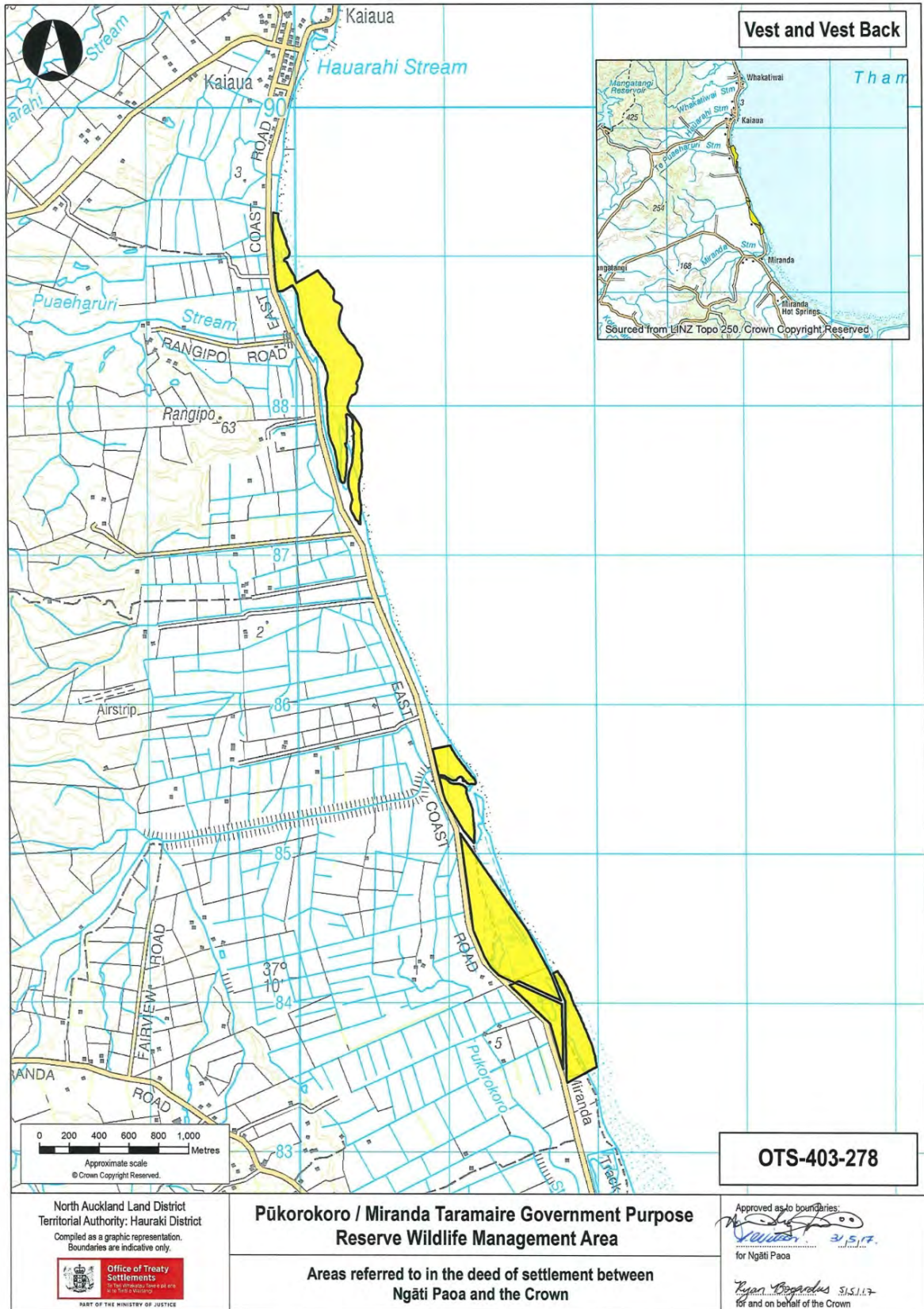
ATTACHMENTS

2: DEED PLANS



ATTACHMENTS

2: DEED PLANS



Vest and Vest Back



Sourced from LINZ Topo 250 / Crown Copyright Reserved.

OTS-403-278

North Auckland Land District
 Territorial Authority: Hauraki District
 Compiled as a graphic representation.
 Boundaries are indicative only.



Pūkoro / Miranda Taramaire Government Purpose Reserve Wildlife Management Area

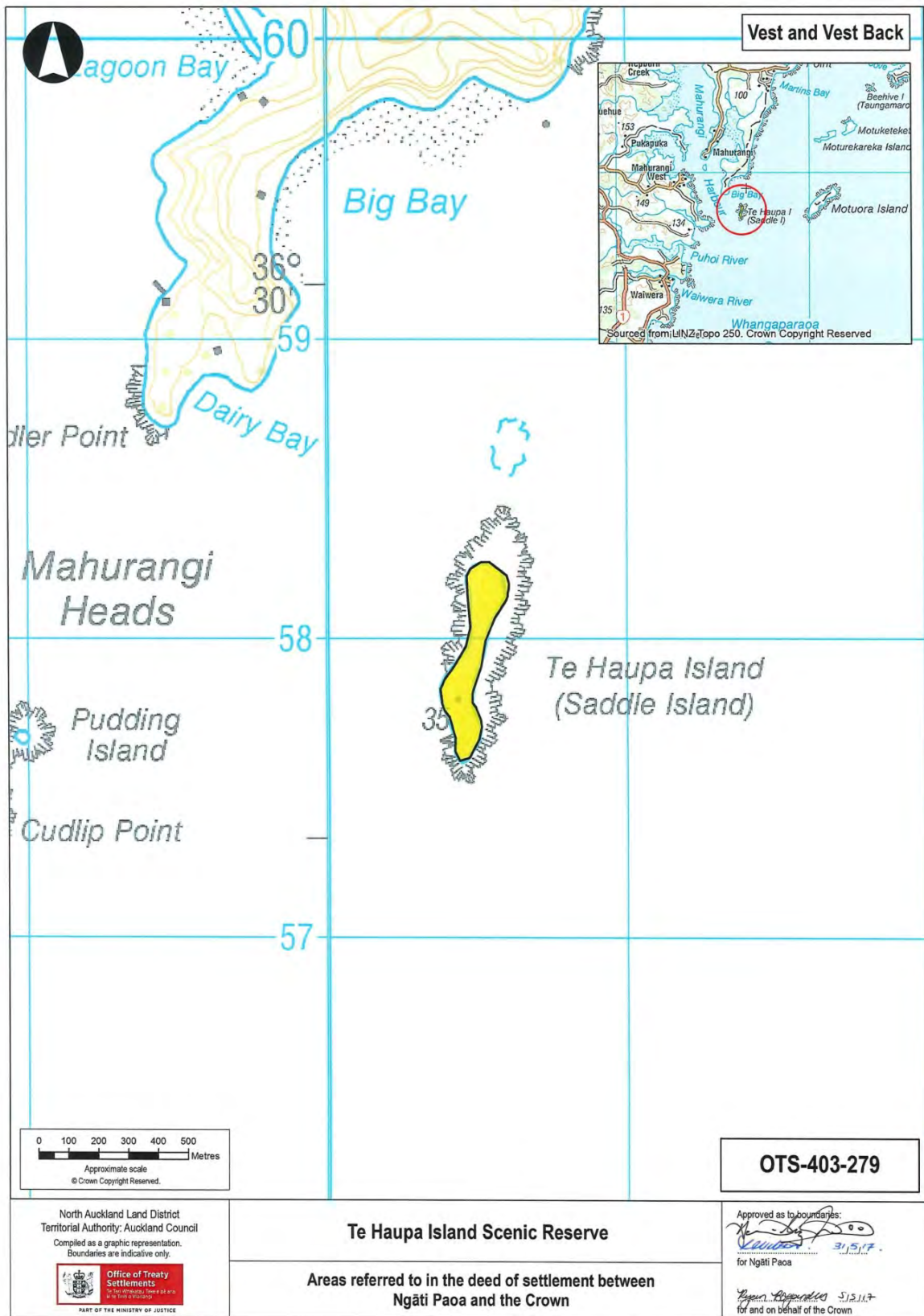
Areas referred to in the deed of settlement between Ngāti Paoa and the Crown

Approved as to boundaries:
[Signature]
 for Ngāti Paoa

[Signature]
 for and on behalf of the Crown

ATTACHMENTS

2: DEED PLANS



ATTACHMENTS

2: DEED PLANS



ATTACHMENTS

2: DEED PLANS



ATTACHMENTS

3 DRAFT SETTLEMENT BILL